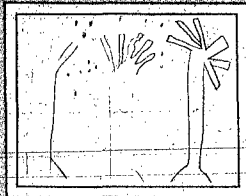


PEOPLE WHO drive into Wayne from the south on Highway 15 will likely notice the "Niemans Christmas" lighting. The lights are everywhere, even up an old windmill that stands near the buildings on the property. The Niemans reside at 323 South Main.

Monday
DECEMBER 22, 1986
WAYNE, NEBRASKA 68787
ONE-HUNDRED NINTH YEAR
NUMBER TWENTY-FOUR
25¢ THIS ISSUE
ONE SECTION, 10 PAGES



Extended Weather Forecast:
Monday through Wednesday; clear to partly cloudy; highs, 40s to 50s; lows, teens to mid-20s.

Ryan, 7
2nd Grade
Winside School.



Wayne-Carroll's wrestling team notched their first dual win of the season with a big win over South Sioux City.

See sports, page 4

THE WAYNE HERALD

Prevention of injuries a concern

Cheerleading policies being studied

By Gregg Dahheim
Sports Editor

Cheerleading is no longer a sideline activity for the non-athletic. It is becoming a contact sport which school districts and athletic conferences across the country aren't too happy about.

In the last year about seven cheerleaders across the country have been seriously injured after falling from a pyramid or other dangerous cheerleading mounts.

According to James Riley, executive director of the Nebraska School Activities Association, seven cases dealing with such injuries are currently in litigation in courtrooms across the United States. Eleven other parties have collected large insurance claims resulting from their injuries.

Many schools are putting restrictions on what the cheerleaders can and cannot do during athletic events.

The NSA and the National Association of Interscholastic Athletics have recently handed down rulings that bans all "stacking and propelling" at all NSAA and NAIA post-season athletic events.

Five area high schools and Wayne State College have already or are in the process of changing school policies dealing with dangerous pyramids and tumbling routines.

Joe Coble, principal at Wakefield Community School, said the administration expects to have an official school board policy dealing with cheerleading regulations next month.

Although it isn't an official policy, the Wakefield administrators have informed the cheerleaders that they are not allowed to build pyramids or perform any shoulder mounts.

"What they can't do off the straight jump they don't do," Coble said.

ALLEN HIGH School has a similar unofficial policy. The cheerleaders will no longer be permitted to build pyramids but the girls are allowed to perform shoulder mounts.

Wayne-Carroll High School Cheerleading Sponsor Mary Lou George said the Wayne cheerleaders can do simple mounts but no shoulder mounts or pyramids.

Laurel-Concord and Winside high schools handle the problem similarly to the other schools. Laurel Superintendent Paul Sellon said the school's policy is to not promote pyramids.

He said the Laurel cheerleaders are not allowed to build multi-person pyramids but they are permitted to perform mounts only if they have a spotter on each side, Sellon said. The superintendent said the administration is currently studying the situation.

Winside Superintendent Don Leighton said they don't encourage the use of pyramids or standing on shoulders but there is no official policy that bans it.

ALL OF THOSE interviewed said their main concern is for the cheerleaders.

The situation has hurt the small colleges worse than high schools or larger colleges.

Tami Breske, Wayne State cheerleading sponsor, said the majority of the male cheerleaders duties were to help the girls on mounts and partner stunts. She said since the cheerleaders can no longer perform those stunts the men chose not to return for the basketball season.

"I'm a little disappointed about the ruling," Breske said. "They worked so hard on the stunts and got to be good friends with the guys and now they're no longer there."

Breske said she does agree with the ruling for the safety sake but she thinks the action is a little drastic.

Wayne State Athletic Director Ron Jones said it is a difficult situation for the cheerleaders but the institution can't afford to be in a lawsuit situation.

Coble said the high school cheerleaders may be in more danger than the college cheerleaders.

"In high school they don't have the time to develop the technique," he said. "The college cheerleaders spend more time practicing."

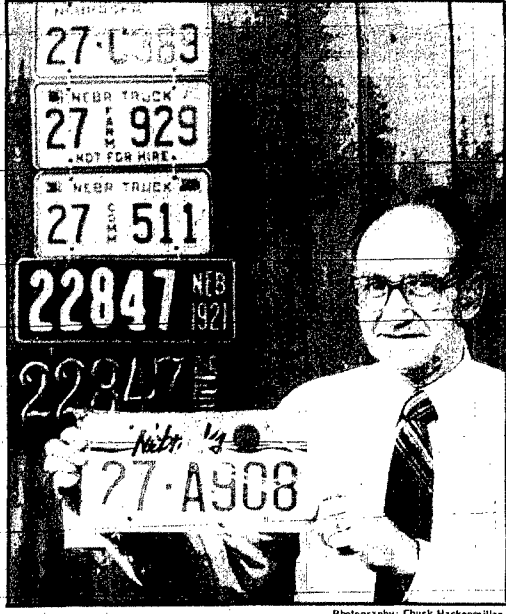
On Feb. 2-3 a legal seminar will be held in Omaha and Kearney. The seminar will deal with school district liability. Riley said cheerleading restrictions will also be a topic for discussion.

Coble said the cheerleading camps the girls attend in the summer will also have to cooperate with the high schools. In previous years the girls are taught how to build pyramids and other multi-person stunts. Coble said the camps should replace the dangerous maneuvers with different routines.

NONE OF THE schools interviewed have experienced any injuries in the last several years due to cheerleaders falling from pyramids or injuring themselves in tumbling routines.

Sellon said he is aware of the concerns and has personally been involved. He said a relative of his fell and broke her leg in three places while she was a cheerleader at Rockhurst College in Kansas City.

"We're taking a real serious look at the situations right now," he said. "I'm just trying to prevent an accident before it can happen," Leighton said. "I don't want to see any kids get hurt."



Photography: Chuck Hackenmiller

New look

BEGINNING JAN. 2, new license plates with the Nebraska tourism logo will be distributed at the Wayne County Treasurer's Office. Nearly 4,700 passenger vehicle plates have been received at the treasurer's office. Costs are \$1 a license plate, according to Treasurer Leon Meyer who holds one of the new plates. In the background are the license plates currently in use, and some of the older antique plates. Truck license plates will have less art but red numbers. No fee license plates will remain as before, according to Meyer.

Holiday Magic winners named

The next to last Wayne Holiday Magic drawing conducted on Thursday produced 30 winners.

The final drawing will take place on Monday, Dec. 22.

Winners this week were:
Dorothy Dangberg, Wayne, \$34.
Wayne Shoe Company; Allan Spittigerber, Wayne, \$6.
Wayne IGA; Em Haase, Wayne, \$11.
Tom's Body and Paint Shop; David Gilliland, Wayne, \$32.
Wayne Grain and Feed; Charles Shapiro, Wayne, \$25.
Black Knight; Don Pfeiffer, Wayne, \$5.
Carlson Clearwater Fish Farms, Inc.

Marge Smitman, Wayne, \$7.
Hazel's Beauty Shop; Howard McLain, Carroll, \$50.
Wayne Skelgas, Inc.; Renee Bartels, Wakefield, \$8.
Office Connections; Lynne Allemann, Wayne, \$28.
Jammer Photography; Merly Baker, Wayne, \$17.
M & H Apco; Irene Hanson, Concord, \$19.
Wayne Herald.

John Swanson, Carroll, \$23.
Carhart Lumber Co.; Joyce Mitchell,

Wayne, \$16.
Kuhn's; Marvin Draghu, Wakefield, \$14.
Fredrickson's Oil; Jeff Triggs, Wayne, \$18.
Arnie's Ford-Mercury; L.A. Day, Wayne, \$1.
State National Bank and Trust; Cheryl Kopperud, Wayne, \$4.
Dairy Queen; Steve Koll, Wayne, \$21.
Ellington Motors.

Vernonica Calhoun, Laurel, \$14.
Pamida; Leonard Hallen, Carroll, \$7.
Morning Shopper; Fred Rickers, Wayne, \$39.
Merchant Oil; LuAnna Westerhaus, Winside, \$6.
Rusty Nall; Victor Carlson, Concord, \$9.
Johnson's Frozen Foods; Beverly Eiter, Wayne, \$24.
Drs. Wessel,

DeNaeyer and Lodes.
Arthur Barghozi, Wayne, \$10.
Carroll Derby; Pat Janko, Carroll, \$9.
Popo's; Bonnie Sandahl, Wakefield, \$10.
Bill's GW; Dennis Jensen, Wayne, \$28.
Logan Valley Implement; and Bonnie Lund, Wayne, \$4.
Swan's.

Among first class cities

Wayne rated in crime reports

During 1985, the city of Wayne ranked the lowest in crimes per population among First Class Cities in Nebraska.

The figures, compiled by the Nebraska Commission on Law Enforcement and Criminal Justice, were recently released to the Wayne Police Department and presented at the most recent Wayne City Council meeting. Police Chief Vern Fairchild said it takes a period of time before all the totals can be tabulated by the commission, which is why the report

comes so late the following year.

There are 29 cities included in the report. First Class Cities, according to Fairchild, are cities with 5,000 or more population (other than Lincoln and Omaha). Wayne is the second lowest in population ranking among the 29 cities.

The report shows Wayne with 12.7 crimes per 1,000 population. Cities of comparable size to Wayne are Falls City at 20.4 crimes per 1,000 people; Holdrege, 24.7 per 1,000; Seward, 28.2 per 1,000 people; Ogallala, 39.9 per

1,000 people; and Chadron at 53.9 per 1,000.

South Sioux City topped the list of crimes per population with 66.8 per 1,000 people, followed by Scottsbluff at 61.3 crimes per 1,000 population.

During 1985, Wayne ranked 11th in the percent of crimes cleared. They also have the least number of officers of all First Class Cities.

Fairchild, when asked about the crime comparisons and the record which Wayne has, said the results "speak for themselves."

Museum funds continue to grow

Funds and pledges are still being received for the Winside Museum project of moving the Theophilus Church from the country into Winside.

To date approximately \$10,100 of the needed \$18,000 has been received in cash and pledges.

Twenty-five percent of all pledges are to be paid by Jan. 1, 1987.

Residents are reminded there will be a country store and craft sale to take place during the first part of 1987 to raise more of the needed funds.

Anyone wishing to donate craft

items or baked goods for this fundraiser should contact Mrs. Veryl Jackson, chairperson of fundraising, at 286-4544.

Those who have historical items which they would like to place in the museum should be giving consideration to this now. The next committee meeting will be Tuesday, Jan. 6 at the N.L. Dittman home, starting at 7 p.m.

Those interested in working on the project are invited to attend.

For more information, contact Bill Burris, committee chairman, at 286-4839.

news briefs

Holiday music

Traditional holiday concerts from eight Siouxland colleges and special programs from around the nation and the world will be featured during KWIT-FM 90's annual "Holidays with a Difference" Dec. 20-27. Musicians from Wayne State College will be heard twice during the week. They will be scheduled for concert on Tuesday, Dec. 23 at 3 p.m., and then again on Friday, Dec. 26 at 10 a.m.

Wayne Herald holiday schedule

The Wayne Herald will be printed on Tuesday, Dec. 23 for early a.m. mail. All copy must be submitted for this issue by 5 p.m. Lincoln Monday. There will be no paper published for Monday, Dec. 29, the U.S. We will be printing again on Tuesday, Dec. 30. All copy for this issue should be submitted by 5 p.m. on Monday, Dec. 29. No paper will be mailed for Monday, Jan. 5.

Library holiday hours

The Wayne Public Library hours during the Christmas season are as follows: Wednesday, Dec. 24 - 1 to 3 p.m.; Dec. 25 and 26 - closed; Saturday, Dec. 27 - open regular hours from 10 a.m. to 6 p.m.

ASCS office closing hours

The Wayne County ASCS offices will be closed Dec. 25 and 26 because of the Christmas holiday. However, the ASCS office is currently planning to be open on Friday, Jan. 2.

Attends water seminar

The Utilities Section of the League of Nebraska Municipalities held a water seminar at South Sioux City, Nebraska. Seventeen utility representatives from 10 municipalities including Jeff Brady of Wayne, attended.

A Rhodes scholar

Paul Ludwig, resident of Signal Mountain, Tennessee and a grandson of the late John and Mada Owens of Wayne, was recently selected to receive a Rhodes Scholarship. He is the son of Walter J. and Ruth O. Ludwig and is a student at the University of Tennessee in Chattanooga.

Mailbox hearing

The Department of Roads will hold three public hearings concerning the adoption of rules and regulations governing the placement of mailbox supports along Nebraska's highway right-of-way. The area hearing will be held at the following location, date and time: Lincoln, Tuesday, Jan. 13 in the Department of Roads' Auditorium, South Junction of US-77 and N-2, at 7:30 p.m. The same information will be presented at each of the three hearings. The Department of Roads will accept written statements as part of the official record for each hearing until January 23. Statements should be submitted to Larry Shafer, Nebraska Department of Roads, P.O. Box 94759, Lincoln, NE 68509-4759.

Vacation guide needed

Applications for the 1987 Nebraska Vacation Guide Program will be available through the Nebraska Department of Personnel, beginning Jan. 2. Thirty-four positions are available during this year's season, May 25 through Aug. 15, 1987. Twenty-four rest areas along Interstate 80 from Kimball to Omaha are staffed. Selected guides will participate in a 10-day familiarization tour of Nebraska. The tour is designed to expose the Guides to the many fine attractions and communities in Nebraska. Any interested persons demonstrating excellent communication skills and a strong sense of Nebraska pride are encouraged to contact Personnel at (402) 471-2075 for an application. Completed applications are due back at Personnel by Friday, January 30 for consideration. For further information on the program contact the Department of Personnel at P.O. Box 94905, Lincoln, NE 68509-4905 or call (402) 471-2075.

Book in office

Tim Book of Wayne, has been elected vice president of the Buena Vista College Student Ambassadors for 1987. The Ambassadors assist the college's admissions staff by acting as a liaison between their hometown high schools and the admissions office of Buena Vista. The college students inform prospective students about Buena Vista and college life. Book, son of Mr. and Mrs. Gary Book of rural Wayne, is a sophomore finance and banking major at Buena Vista.

service station

Pvt. Elizabeth L. Janki, daughter of Byron L. and Patricia R. Janki of Carroll, has completed the automatic data telecommunications operator course at the U.S. Army Signal School, Fort Gordon, Ga. The course provides instruction for the soldiers to type, transcribe and process messages in an automatic data telecommunications center.

obituaries

Marie Hansen

Marie Hansen, 81, of Wayne died Wednesday, Dec. 17, 1986 at the Providence Medical Center in Wayne. Services were held Friday, Dec. 19 at the Redeemer Lutheran Church in Wayne. The Rev. Daniel Monson officiated. Marie Hansen, the daughter of Peter and Christina Pedersen Rasmussen, was born July 12, 1905 in Newcastle. She married Carl B. Hansen on March 10, 1933 in Laurel where the couple farmed until 1956 when they moved to Wayne. Mrs. Hansen worked at the Wayne Care Centre. Mr. Hansen died in 1979. She was a member of the Redeemer Lutheran Church in Wayne. Survivors include two sons, Carl L. Hansen of South Sioux City and Kenneth Hansen of Brandon, S.D.; one daughter, Mrs. James (Eleanor) Merritt of Norfolk; 11 grandchildren; three sisters, Mrs. Andrew (Grace) Hansen of Wayne, Mrs. Duane (Norma) Brockmoller of Englewood, Calif. and Mrs. Clarence (Helen) Elsbury of Norfolk; and three brothers, John Rasmussen of Ponca, George Rasmussen of Dixon and Albert Rasmussen of Laurel. She was preceded in death by her husband, her parents, one sister and four brothers. Pallbearers were Jim Hansen, Gene Hansen, Harlan Hansen, Randy Rasmussen, Earl Rasmussen and Jack Rasmussen. Burial was in the Laurel Cemetery in Laurel with McBride-Willst Mortuary in charge of arrangements.

Jesse Kelly

Jesse Kelly, 82, of Page died Tuesday, Dec. 9, 1986 at the Yuma Regional Medical Center in Yuma, Ariz. Services were held Saturday, Dec. 13 at the United Methodist Church in Page. The Rev. Scott Kroener officiated. Jesse S. Kelly, the son of Larbee S. and Adeline Reed Kelly, was born Feb. 25, 1904 in Stanton. He was a farmer and an electrician. He moved to Holt County in 1913 from Stanton. He married Millie Z. Thompson on Feb. 5, 1929 in O'Neill. For the past 17 years they have spent the winter months at Yuma, Ariz. He was a member of the Modern Woodmen Lodge and Holt County Historical Society. Survivors include his wife; one son, Tom of Page; two daughters, Beverly Hansen of Wayne and Ruth Grimes of Chambers; 15 grandchildren; and 17 great grandchildren. He was preceded in death by his parents and two infant sisters. Burial was in the Page Cemetery.



Photography: Chuck Hackenmiller

A time for sharing

MR. AND MRS. Santa Claus (Roy and Mabel Sommerfeld) accept a \$400 gift from Lutheran Brotherhood Branch 8212, represented by Loren Studthoit (at far left) for the Good Neighbor Program which is sponsored by the Wayne Senior Citizens Center. This donation is a portion of the \$2,650 in gift certificates that were given to children of needy families. Money was also furnished from the M.E. Way Memorial Fund (\$2,200) and the Carroll United Methodist Church also con-

tributed. Each child was allotted \$50 to be used for purchase of clothing at a local store. The program covered 53 children from 22 families. Also presented to the children, as a project by the Wayne city employees, were 20 pair of mittens. Representing the Senior Citizens Center is Georgia Janssen (far right). Santa and Mrs. Claus presented the gift certificates and the mittens Thursday afternoon at the Senior Citizens Center.

county court

Traffic fines
Douglas P. Kassmeier, Dodge, speeding, \$19; Kely A. Mayer, Sioux City, Iowa, speeding, \$28; David H. Heinemann, Wakefield, speeding, \$40; Patrick L. McCormick, Wayne, no valid registration, \$25; Michael J. Belt, Wayne, allowing animal to run at large, \$5; Helen Pearson, Concord, failure to stop for stopped school bus (unloading kids), \$100; Shaun R. Niemann, Carroll, no operator's license, \$25; Troy W. Milligan, Carroll, speeding, \$31; Kevin K. Echtenkamp, Wayne, speeding, \$52; Douglas A. Doeschner, Wayne, no valid registration, \$25; Victor R. Carlson, Concord, speeding, \$19; Loretta L. Rasmussen, Norfolk, speeding, \$28; Danny A. Crawford, Concord, speeding, \$22; James J. Jacobsen, Norfolk, speeding, \$22; Karen T. Salzman, Arlington, speeding, \$31; Jason E. Raelcy, Wayne, speeding, \$13; Barry A. Brown, Norfolk, speeding, \$10; Michelle J. Kai, Wayne, speeding, \$28.

Criminal disposition
Randy R. Ogren, driving while under the influence of alcoholic liquor, fined \$200, probation six months and license impounded 60 days.
Craig T. Hilgendorf, Wayne, procuring alcoholic liquor for a minor, five days at the Wayne County Jail, fined \$200, perform 150 hours of community service work.
Harvey J. Pinkelmann, Wayne, procuring alcoholic liquor for a minor, fined \$200, five days in jail and 150 hours of community service work.

Small Claims disposition
Wayne County Public Power District awarded \$38.60 from Daniel Chase.
Diane R. Borgmann awarded \$920.83 from Becky Christensen.

Criminal filings
John H. Schuttler, Wayne, minor in possession.

vehicles registered

1987: Margaret Sundell, Wayne, Olds; E. Clark Rasmussen, Wayne, Honda.
1986: Greve Arms, Inc., Wakefield, Buick.
1985: Alfred Beckmann, Pender, Lincoln.
1984: James Jensen, Winside, Ford; Joyce Reeg, Wayne, Chev.
1982: Lowell Olson, Carroll, Chev. Pu; Bruce Johnson, Wayne Olds; Glendon Meyer, Pender, Olds; Verona Wantoch, Hoskins, Pontiac; Gene Mueller, Hoskins, Datsun.
1979: Dwayne Schmitt, Randolph, Ford; Dale Behrens, Carroll, Ford.
1978: Betty Henschke, Wakefield, Ford.
1976: Debbie Vann, Wayne, Chev.; Ronald Hoefler, Hoskins, Chev.; William Young, Laurel, Ford.
1972: Eugene Longe, Wayne, Chev.
1972: Walter Fleer, Jr., Hoskins, Ford.
1960: Kirk Echtenkamp, Wayne, Chev. Pu.

weekly gleanings

THE FREMONT and Elkhorn Valley Railroad is seeking letters of support and financial contributions from communities along its tourist and proposed freight lines. The rail line needs \$200,000 to \$300,000 to buy the line from Hooper to West Point and to pay for improvements that it would like to make during the winter months.
SANDI Finck, daughter of Mr. and Mrs. Dale Finck and a senior at Wausau High School, was crowned Queen of Light - St. Lucia - in the annual Luciadagen celebration held at Thabor Lutheran Church in Wausau.
JANICE Kruger, a Randolph High School graduate presenting serving as head coach of the University of

Nebraska-Omaha volleyball team, was named national volleyball coach of the year in Division II by the Collegiate Volleyball Coaches Association. Kruger is the daughter of Mrs. Lawrence Kalvelage.
WISNER has hired the services of a Lincoln law firm to assist the city in the acquisition of Minnegasco's natural gas service to Wisner.
PARK View Haven and the Hilary Hoelsing residence in Coleridge were first place winners in the business and residential divisions of this year's annual Christmas Lighting and Decorating Contest. Cosponsoring the contest were the Arts and Crafts Extension Club and the Coleridge Commercial Club.

dixon county court

Vehicle Registration
1987: Carol Jackson, Allen, Ford; Loren Lund, Allen, Wilson Punched Side Drop Center Livestock Trailer; Malcolm E. Jensen, Emerson, Toyota; Steve Husen, Newcastle, GMC Suburban PD.
1982: Michael L. Salmon, Wakefield, Ford.
1984: Max C. Loetscher, Allen, Pontiac.
1982: Irma Foulks, Ponca, Volkswagen.
1981: Darrel R. Uthof, Allen, Ford Pickup.
1980: James E. Hough, Allen, Chevrolet; Dennis McCorkindale, Allen, Dodge.
1979: Darrel Uthof, Allen, Oldsmobile; Bradley Risinger, Waterbury, Ford.
1977: Dan J. O'Neill, Waterbury, Plymouth.
1976: Melvin Puhmann, Concord, GMC Trailer; Leo Peters, Wakefield, Chevrolet Blazer.
1975: Jeff Lewon, Newcastle, Pontiac; Glennis Jenkins, Newcastle, Chevrolet.
1973: Brenda L. Jones, Wakefield, Volkswagen.
1971: Allen W. Keagle, Wakefield, Ford Truck.

1968: Dorothy E. Anderson, Newcastle, Chevrolet; Nicholas D. Sullivan, Jr., Ponca, Mercury.
1959: Calvin Prahm, Ponca, Ford.
Court fines:
Timothy D. Foster, Vermillion, South Dakota, \$31, speeding; Jon K. Erwin, Wakefield, \$521, overweight capacity plates; Brenda L. Fiscus, Allen, \$47, speeding; Mark W. McKinley, Newcastle, \$46, no valid registration; Robert L. Moore, Jr., LeWards, IA, \$40, speeding; Robert D. Jueden, Harlington, \$37, speeding; Richard A. Abts, Dixon, \$71, hunting with the aid of an artificial light from a motor vehicle; Richard D. Ebmeier, Laurel, \$71, hunting with the aid of an artificial light from a motor vehicle; Mark A. Ebmeier, Laurel, \$71, hunting with the aid of an artificial light from a motor vehicle.

Archdiocese funding drive established


A major capital funds campaign for the Archdiocese of Omaha was announced Thursday morning. The Most Rev. Daniel E. Sheehan, Archbishop of Omaha, said that a campaign to raise \$12.5 million for a number of projects and programs in the Archdiocese will be launched immediately. The Archbishop noted that this is the first comprehensive capital funds effort in the Archdiocese in many years. Bishop Joseph F. Rummel's fund drive, in the mid 1920's, and the limited Catholic education drive, in 1964, were the most recent. He said the funds will be used for a wide range of things from capital improvements of archdiocesan facilities to building endowment funds for various human service programs. Among the needs to be met by the capital campaign are endowments for seminarian education, clergy and religious pension funds, St. Cecilia's Cathedral endowment, and rehabilitation of the St. James Center where the United Catholic Social Service organization and many Archdiocesan offices are located. Embracing 138 parishes in 22 Nebraska counties, the Archdiocese generates over \$100 million for the area's economy. The Archdiocese represents close to a quarter of a million people and educates some 26,000 students through the parochial school system. The Archbishop said the campaign will continue through next spring. Upon completion of the campaign, a number of the projects will begin.

THE WAYNE HERALD

PUBLICATION NUMBER - USPS 670-560
Serving Northeast Nebraska's Greatest Farming Area

Publisher - J. Alan Cramer
 Managing editor - Chuck Hackenmiller
 Assistant editor - LeVon Anderson
 Sports editor - Gregg Dahheim
 Business manager - Jim Marsh
 Advertising executive - Patti Zrust
 Receptionist - Jackie Nolan
 Bookkeeper - Linda Granfield
 Typesetter - Alyce Henschke
 Composition foreman - Judi Topp
 Composer - Shelly Jaeger
 Press Foreman - Ray Murray
 Pressmen - Al Pippitt, Jeff Sperry
 Commercial printing manager - Dave Diederich
 Commercial printer - Mike Bebee
 Mailroom manager - Doris Clausen
 General assistant - Betty Ulrich

114 Main Street Wayne, Nebraska 68787 Phone 375-2600



PRIZE WINNING NEWSPAPER 1986

National Newspaper Association
 Sustaining Member 1986

Established in 1875, a newspaper published semi-weekly, Monday and Thursday (except holidays), by Wayne Herald Publishing Company, Inc., J. Alan Cramer, President; entered in the post office and 2nd class postage paid at Wayne, Nebraska 68787.
POSTMASTER: Send address change to The Wayne Herald, P.O. Box 71, Wayne, NE 68787.

Official Newspaper of the City of Wayne, the County of Wayne and the State of Nebraska

SUBSCRIPTION RATES

In Wayne, Pierce, Cedar, Dixon, Thurston, Cumming, Stanton and Madison Counties, \$16.69 per year, \$15.98 for six months, \$12.16 for three months. Outside counties mentioned: \$19.00 per year, \$16.00 for six months, \$14.00 for three months. Single copies 25 cents.

marriage licenses

Daniel J. Westerhaus, Winside, and Donna Sue Johnson, Winside.

congregate meal menu

Monday, Dec. 22: Swiss steak with tomato sauce, scalloped potatoes, baked squash, five-cup salad, whole wheat bread, pudding.
Tuesday, Dec. 23: Ham loaf, herb baked potatoes, asparagus, dipped banana salad, rye bread, custard.
Wednesday, Dec. 24: Chill or oyster stew, relishes, apricots, Christmas salad, cinnamon roll, Christmas cookie.
Thursday, Dec. 25: Center closed in observance of Christmas.
Friday, Dec. 26: Fish square on a bun, oven browned potatoes, sweet and sour red cabbage, spiced peach bun, cherries.
 Coffee, tea or milk served with meals

news and notes

Many features extension agent home ec

Roasting and salting nuts at home

Nuts salted at home are a comparatively inexpensive delicacy. For use in baked products, the flavor of some mild-flavored nuts — such as almonds, hickory nuts, Persian (English) walnuts and filberts — may be developed by either roasting or frying.

Blanching or removing the skin from smooth-surfaced nut meats may be necessary for some nuts, but is not necessary before roasting such tender-skinned nuts as pecans, hickory nuts and walnuts.

To blanch almonds, pour boiling water over them and hold at simmering temperature (185 degrees F) for three minutes. Then drain. The skins should come off easily when pressed with thumb and forefinger. Spread the blanched kernels on absorbent paper and dry overnight at ordinary room temperature.

Peanuts may be water-blanched like almonds, but this is unnecessary if they are to be prepared in the oven because the skins will slip off easily after roasting.

THERE ARE TWO roasting methods for nuts.

In the following two recipes, two teaspoons of cooking oil or melted vegetable oil or table fat — just enough to cover the kernels — and one tablespoon of salt are sufficient for each cup of nut meats.

Frying, pan-roasting. To roast pecans, hickory nuts or Persian (English) walnuts, combine whole nut meat halves with the oil or melted fat in a fry pan. Place over low heat, stirring constantly, until hot through. Avoid overcooking. Nut meats, particularly pecans, darken a little more after being removed from the heat and become crispier as they cool. Drain on absorbent paper and sprinkle with salt.

Blanched almonds or blanched raw peanuts may be roasted similarly, but they must be heated a little longer — until light brown in color (about 15 to 30 minutes in all, depending on the size of nuts and degree of brownness desired). For "redskin" peanuts, follow this same method, but use unblanched raw peanuts.

OVEN-ROASTING. Combine nut meats and the oil or melted fat, and spread in a single layer in a shallow pan. Heat in a moderately hot oven (375 degrees F), stirring frequently, until hot throughout. Drain on absorbent paper and sprinkle with salt. As in the "frying pan" method, almonds and peanuts must be heated a little longer than pecans, hickory nuts or walnuts.

Another way to prepare raw peanuts is to roast them in the oven with their skins on, adding the fat later. First, spread the shelled peanuts in one layer in a shallow pan and heat in a moderately hot oven (375 degrees F), stirring frequently for 15 to 30 minutes.

For "redskins," add fat immediately after removing from oven — one teaspoon to each cup of peanuts. Stir until evenly coated, drain on absorbent paper and sprinkle with salt.

For plain salted peanuts, cool and slip the skins off by pressing between thumb and forefinger. Add fat and place over low heat, shaking or stirring nuts constantly until well-coated and warm. Drain on absorbent paper and sprinkle with salt.

Peanuts bought and roasted in the shell may be shelled, warmed in a little fat over low heat, and salted as in above recipe.

ASM scholarship to Wayne native

The Lincoln chapter of the Association for Systems Management (ASM) has announced that its annual scholarship has been awarded to Wayne native Cheryl Jean (Schram) Harral, daughter of Dean and Margaret Schram of Wayne.

Harral is a fourth quarter student in computer programming at the Milford Campus of Southeast Community College.

ASM member Glenn Morey of Lincoln said the tuition scholarship is awarded to a student with a grade point average of B or higher.

HARRAL HAS been on the Milford Campus honor roll each of her four quarters in programming.

Next June, she will have completed all six quarters in computer programming and will receive the associate of applied science degree.

She would like to find a position in Lincoln, where she lived for a time prior to enrolling at Milford.

As for long-range plans, the Wayne-Carroll High School graduate said a degree in business administration is a likely possibility. She has



Cheryl Harral

already accumulated 98 semester hours, having attended both Wayne State College and Platte Community College.

Woman's Club has Christmas program

A special Christmas program was the highlight of the Dec. 12 meeting of Wayne Federated Women's Club. Twenty-one members and one guest met in the Woman's Club room.

The program began with a reading by Eleanor Manning, entitled "Why the Chimes Rang." Marian Jordan narrated the birth of Christ with members singing "I Heard the Bells on Christmas Day," "It Came Upon a Midnight Clear," "Hark, the Herald Angels Sing," "O Little Town of Bethlehem" and "Silent Night." Mrs. Jordan and Dorothy Grone took part in a skit written by Mrs. Jordan, entitled "Memories of Christmas Past." Carolers were Eleanor Manning, Leona Daum and Lillian Granquist.

THE DECEMBER business meeting opened with the flag salute, reading of the minutes by Lillian Granquist, and treasurer's report by Marian Jordan.

Dorothy Grone read a Christmas card received from Mrs. Merlyn Stadler, state president.

Standing committees reported, and

Evening circle family potluck

The Evening Circle of Grace Lutheran Church met Dec. 9 for a family potluck supper with Elsie Echtenkamp, Marilyn Rethwisch and Susan Vogel serving as hostesses.

The Rev. Jon Vogel and the Rev. Jim Pennington were each presented Christmas gifts from circle members.

President Faunell Bennett called the meeting to order, and roll call was answered with a favorite Christmas song. Attending were 16 members and 23 guests.

The president reported on the circle's accomplishments during the past year. Susan Vogel explained the "Better Project International," and Christmas donations were given to the project.

PASTOR VOGEL thanked outgoing officers and installed new officers for 1987.

Janet Casey and Susan Vogel, members of the program committee, introduced a slide presentation by Pastor Vogel on "The History of Grace Lutheran Church."

Janet Casey read "Dreaming of a Right Christmas," and everyone joined in Christmas songs. The program closed with a Christmas prayer by Janet Casey.

new arrivals

SIEFKEN — Dr. and Mrs. Arnie Siefken, Jamestown, N. D., a daughter, Brienna Bree, Dec. 12. Brienna joins a sister Kendra, 2½. Grandparents are Mr. and Mrs. Merlin Kenny, Carroll, and Mr. and Mrs. Arnold Siefken Sr., Altona.

briefly speaking

Club has Christmas potluck

Nine members of the Monday Mrs. Home Extension Club met with Sue Siefken on Dec. 15 for a Christmas potluck meal. Serving on the entertainment committee were Cornis Upton and Terri Headley. Rummikub was played with highs going to Doris Meyer and Donna Eckhoff, and lows to Barb Meyer and Sue Siefken. Cross-stitched tree ornaments were given for high and low at each table. The meeting closed with a gift exchange of homemade items.

Pleasant Valley Club

Pleasant Valley Club met with Hollis Frese on Dec. 17. Fourteen members answered roll call with how Christmas is observed in other countries. Cards were played and gifts exchanged.

The club has purchased a Christmas gift for a resident of Wayne Care Centre.

Next meeting will be the annual family dinner on Jan. 21 at noon at the Black Knight.

Hot Times!

JOIN AK-SAR-BEN!

And get much more for your entertainment dollar than ever before — enough people-pleasing fun to suit every member of the family. One membership means —

TWO TICKETS TO EACH OF FOUR SIZZLING STAGE SHOWS...



George Burns

The George Burns Show
starring George Burns
with The Aldridge Sisters
March 16-22



George Strait

George Strait
with special guest star Marie Osmond
March 30-April 5



Miami Sound Machine

Miami Sound Machine
September 1-6



The Oak Ridge Boys

The Oak Ridge Boys
September 7-13

NEW THIS YEAR!
FOUR HOT SHOWS —
ONE MORE THAN LAST YEAR.

PLUS... discounts for The Ice Capades, The Rodeo, River City Festival Activities, and coupons for ice skating and Thoroughbred racing.

HOT TIMES... JOIN AK-SAR-BEN!

This year Ak-Sar-Ben is offering two types of memberships. Special "Gold Memberships" have been added and are offered to current members first. Only 20,000 Gold Memberships will be sold.

A GREAT IDEA FOR CHRISTMAS! GIFT CERTIFICATES ARE AVAILABLE!

GOLD MEMBERSHIP
Reserved Seating Plus Other Features
\$50

REGULAR MEMBERSHIP
General Seating Plus Other Features
\$30

YES! I want to treat my family to 1987's Hot Times. I hereby apply for a 1987 non-stock, non-assessable supporting membership in the Knights of Ak-Sar-Ben. (Make checks payable to Ak-Sar-Ben).

Name _____
Address _____
City _____ State _____ Zip _____

Mail to: Al Cramer, c/o The Wayne Herald, 114 Main, Wayne, NE 68787

Check one: New Membership Renewal Membership

Check one: Gold \$50 Regular \$30

HURRY!

Only 20,000 Gold Memberships to be sold. All memberships available on a first come basis.

school lunches

ALLEN

Monday, Dec. 22: Goulash, carrot and celery sticks, half orange, breadsticks.

Tuesday, Dec. 23: Barchettas, green beans, pears, mud cookie. Milk served with each meal.

WAKEFIELD

Monday, Dec. 22: Cheeseburger sandwich, French fries, pickle spears, peaches.

Tuesday, Dec. 23: Hot thin sliced ham sandwich, relishes, ice cream cup, Christmas treat. Milk served with each meal.

WAYNE-CARROLL

Monday, Dec. 22: Ham and cheese with bun, or turkey and cheese with bun, potatoes au gratin, green beans, cake with whipped topping.

Tuesday, Dec. 23: Pizzaburger with bun, corn, peaches, cookie. Available daily: Chef's salad, roll or crackers, fruit or juice, and dessert. Milk served with each meal.

WINSIDE

Monday, Dec. 22: Ham, scalloped potatoes, cranberry salad, rolls and butter, Christmas cookie, or salad plate.

Tuesday, Dec. 23: Sloppy Joes, corn, gingerbread, or salad plate. Milk served with each meal.

NOTICE

Anyone who has brought photos into the Wayne Herald for publishing or other purposes, please pick them up at your earliest convenience. Thank You!

ENJOY THE MUSIC OF **MARK LAMBERT** A SINGER/SONGWRITER FROM NASHVILLE, TENNESSEE



Mark plays a variety of songs including contemporary country, pop, rock, and old favorites.

Entertaining
December 26 & 27
and New Year's Eve

At
THE LUMBER CO.
Restaurant Lounge & Package
113 So. Main — 375-1463

MAKE RESERVATIONS NOW
375-1463

Wayne pins loss on Cardinals

Wayne-Carroll picked up its first dual meet win of the season and first in the NAC on Thursday night at home with a nip and tuck 34-33 win over rival South Sioux City.

Blue Devil Head Coach John Murtaugh said picking up the first dual win felt great, and he heaped praise on his team's performance.

"We out-wrestled them in nearly every match. The kids really deserved this one," he said.

Wayne had to overcome an 18-0 deficit early in the match because of opens in the 96, 105 and 112 pound classes.

The Cardinals who got the three forfeits were Mike Kober, Shane Olson and Shawn Holden.

And then the Blue Devils went to work. The Wayne charge was led by 119 pounder Marc Rahn, who pinned his opponent with just 56 seconds left in the first period.

In the next weight class, Cardinal Randy Davis was able to pin down Chad Frey with 1:12 left in the third period. South Sioux City held a 24-6 lead at this point.

Wayne's Greg DeNaeyer closed the team scoring gap considerably with his pin in the first period over Scott Engel at 132 pounds.

IN THE NEXT match at 138, Blue Devil Paul Walde lost a heartbreaker decision at the final tick of the third period as his opponent Brad Persinger scored on a last-second reversal to break a 7-7 tie.

Walde was ahead 5-2 in the first period and it was tied at 5-5 at the end of the second period. Persinger went ahead 5-7 and Walde rallied to tie.

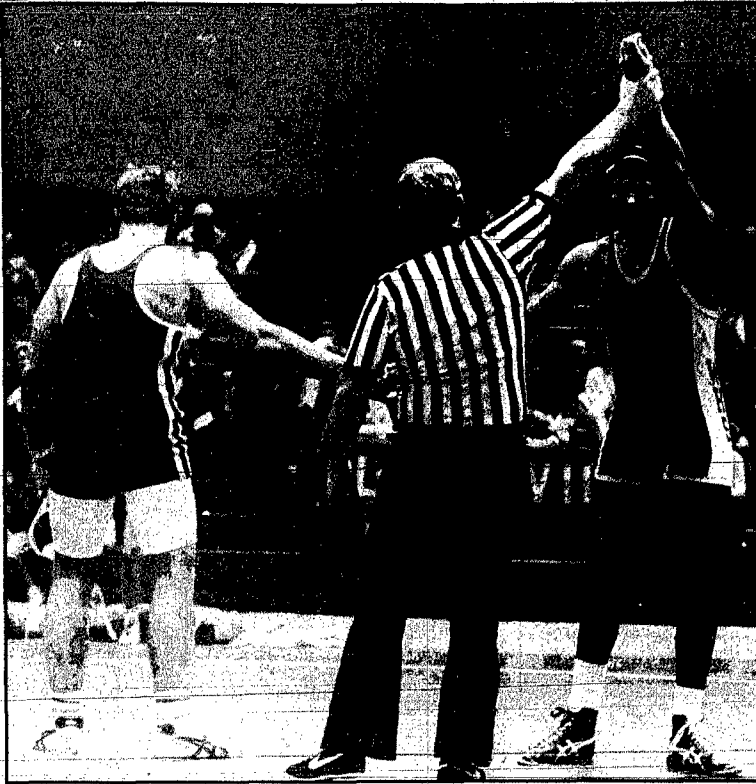
The score at this point was 27-32 in the Cardinals' favor.

Wayne stormed back in determined fashion by pinning opponents in the next three weights. Robbie Gamble pinned Jason Frost at :56 and the score was 27-18. Bill Landanger recorded a pin over Todd Peters with 54 seconds left in the second period, making the score 27-24.

Jason Cole put the Blue Devils over the top with his second period pin over Lynn Bomar.

The Blue Devils were ahead 30-27 when Chris Lutt, at 185 pounds, manhandled Cardinal Mike Rich 8-0 to gain a major decision (worth four points) and give Wayne the necessary points needed to claim the dual victory.

Last year, South Sioux City had humbled the Wayne wrestlers by a



BLUE DEVIL WRESTLER Jason Cole has his arm raised by the official after he pinned Lynn Bomar of South Sioux City Thursday night. Wayne won the dual 34-33.

60-3 score. "We remembered that and wrestled them tough," said Murtaugh.

MURTAUGH said recent tough wrestling tournaments with tough competition have been helpful to the Blue Devils as far as improvements and learning are concerned. "We're only going to get better because of them," he said.

In the "B" team wrestling matches against South Sioux City, all Wayne wrestlers were victorious.

Results show Tom Etter winning

two matches, with a pin at 4:38 and decision 8-0; Shane Geiger, recording two pins at :42 and 2:36; Tony Johnson getting a pin in the second period; Brian Nelsen winning via pin twice at 1:45 and :34; and Tim Sievers winning a decision 10-9 and then pinning his next opponent in 1:53.

Varsity results:
98 — Mike Kober (SSC) won, open.
105 — Shane Olson (SSC) won, open.
112 — Shawn Holden (SSC) won, open.
126 — Marc Rahn (W) pinned Lance

Dwyer, 1:04.
132 — Greg DeNaeyer (W) pinned Scott Engel, 1:23.
138 — Brad Persinger (SSC) decision Paul Walde, 8-7.
145 — Robbie Gamble (W) pinned Jason Frost, :56.
155 — Bill Landanger (W) pinned Todd Peters, 3:06.
167 — Jason Cole (W) pinned Lynn Bomar, 3:03.
185 — Chris Lutt (W) major decision Mike Rich, 8-0.
Hwt — Tim Saltzman (SSC) pinned Stuart Rethwisch, 3:17.



WAKEFIELD'S KEVIN GREVE gets off a shot over a Hartington player.

Poor FT shooting leads to Trojan loss against Hartington

By Gregg Dahlheim
Sports Editor

It was a night where neither team had a lead larger than five points but in the end free throws decided the game in favor of Hartington.

The Wildcats nipped Wakefield 36-35 on the Trojans home floor Friday night.

Wakefield scored two more field goals than Hartington but only hit 1-8 free throws while the Wildcats connected on 6-10 charity tosses.

The Trojans scored first when Scott Lund took the jump ball and drove in for a layup less than 10 seconds into the game. Wakefield posted a four point lead only to allow Hartington to tie the score at 8-8 thanks to several Trojan turnovers.

The hosts' first eight points came from inside of the three-second lane.

Wakefield led after the first quarter 10-8 and at halftime 18-17. Hartington looked to go on top after they took the clock all the way from 57 seconds to six seconds but a basket was disallowed when the Wildcats were called for three second violation.

In the third quarter Wakefield appeared to have control. They took the biggest lead of the game at 24-19 when Kevin Greve hit from the inside with four minutes left in the quarter. But that lead didn't last long.

The Wildcats trailed by one with 1:07 left in the period when they decided to go for the last shot. They worked the clock down to two seconds before Jim Topf drilled a 15-foot baseline jumper to give the Wildcats a 27-26 lead after three quarters.

Wakefield jumped back on top in the final stanza at 30-27 but back came Hartington with four unanswered points to regain the lead. The Trojans got the lead back but Bryan Johnson's two free throws with 1:16 left tied the score at 32-32.

On Wakefield's next possession Greve was fouled. The senior hit one of two free throws to give Wakefield the 33-32 lead. Seconds later Johnson

again scored for Hartington to give the lead back to the Wildcats. On its next possession Wakefield was called for a three-second violation.

But the Trojans still had a chance to win the game when Scott Lund picked off a Hartington pass and was fouled with 10 seconds to play. After a timeout Lund missed the front end of a one and one situation and Hartington's Johnson got the rebound and was fouled. He again hit two free throws and iced the game for the Wildcats.

Wakefield Coach Paul Eaton said he was disappointed with his team's free-throw shooting and turnovers. Eaton said his team is usually a pretty good free-throw shooting team.

Greve led Wakefield with 17 points. No other Trojan finished in double figures. The senior also pulled down seven rebounds.

"The ball should have been going inside all night long but it didn't," Eaton said. "Kevin had a nice game but we didn't get it to him enough."

Eaton said after reviewing the film of the game he was pleased with the team's improvement in the rebounding area. He said his team was aggressive when they went to the boards against Hartington. The Trojans outrebounded Hartington 28-11. Mike Nelson led the team with nine caroms.

The loss dropped Wakefield's record to 0-4.

In the preliminary bout the Wakefield junior varsity ran its record to 3-1 with a 42-30 win over Hartington. Tony Krusemark led the JV's with 18 points.

| Wakefield | 10 | 8 | 8 | 9-35 |
|------------|----|------|----|------|
| Hartington | 8 | 9 | 10 | 7-36 |
| Wakefield | FG | FT | F | TP |
| Greve | 8 | 1-2 | 4 | 17 |
| Lund | 3 | 0-2 | 4 | 6 |
| Clark | 1 | 0-2 | 1 | 2 |
| Kraike | 3 | 0-0 | 3 | 6 |
| Nelson | 2 | 0-2 | 2 | 4 |
| Kinney | 0 | 0-0 | 0 | 0 |
| Totals | 17 | 1-8 | 8 | 35 |
| Hartington | 15 | 6-10 | 13 | 36 |

Roncalli hot streak dooms Wayne cagers

The Wayne Blue Devils are still looking for their first win of the season after traveling to Omaha Friday night to challenge Omaha Roncalli.

The Crimson Pride dropped Wayne to 0-5 turning back the Blue Devils 60-45.

The difference in the game was at the free-throw line. Roncalli blistered 81 percent of its free throws, canning 18-22. The locals only managed to hit 5-14 free-throw attempts. From the field the game was tight. The Crimson Pride made 21 field goals compared to Wayne's 20.

Assistant Coach Ron Carnes said poor shooting has hurt the Blue Devils all season.

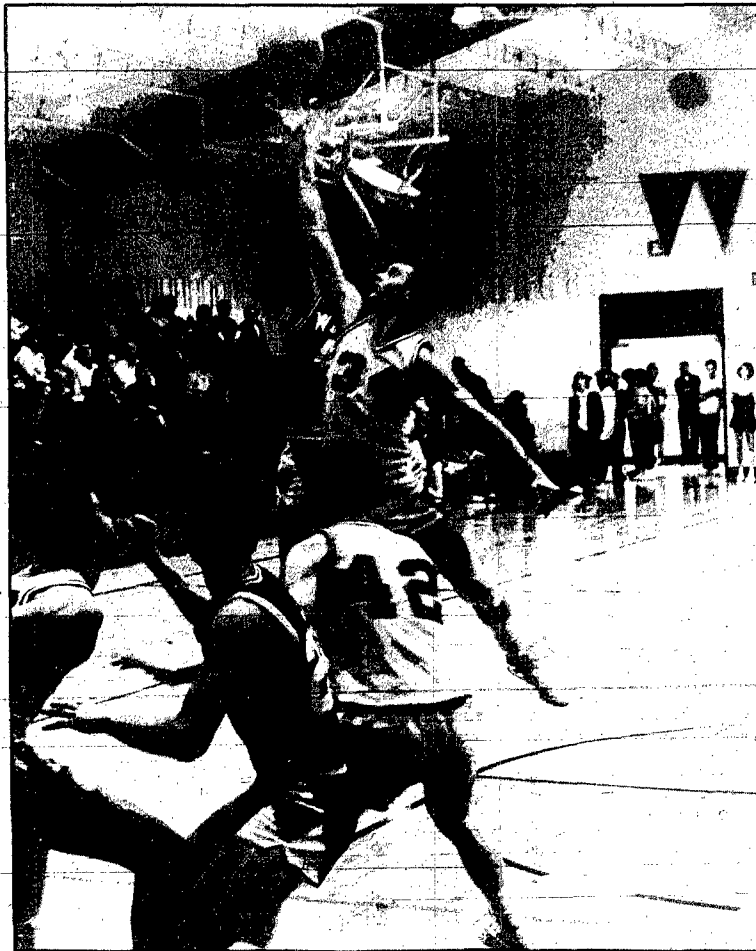
"We're not playing well together," he said. "We take turns having good nights we don't do it all on the same night."

Friday night it was Nick Engelson's turn. Engelson led the team in scoring and rebounding. He tossed in 14 points and pulled down nine rebounds. Ted Lueders and Corey Dahl also scored in double figures. The pair finished with 12 and 10 points respectively. Scott Lynch led the Crimson Pride with 21 points.

Carnes said another area the Blue Devils need to work on is rebounding. Wayne pulled down 24 rebounds but they collected only four on the offensive end.

Wayne will next be in action when they play Atkinson West in the Wayne State Holiday Tournament Dec. 30.

| | | | | |
|-----------|----|-------|----|-------|
| Wayne | 6 | 14 | 15 | 10-45 |
| Roncalli | 14 | 16 | 15 | 15-60 |
| Wayne | FG | FT | F | TP |
| Lueders | 6 | 0-2 | 2 | 12 |
| Jorgensen | 2 | 0-1 | 4 | 4 |
| Dahl | 3 | 4-6 | 1 | 10 |
| Ziess | 1 | 0-0 | 0 | 2 |
| Engelson | 7 | 0-1 | 4 | 14 |
| Liska | 1 | 1-3 | 1 | 3 |
| Hammer | 0 | 0-0 | 0 | 0 |
| Totals | 20 | 5-14 | 17 | 45 |
| Roncalli | 21 | 18-22 | 18 | 60 |



Stretching upward

TROJAN MIKE NELSON (34) and a Hartington player battle for a rebound in the first half. Stuart Clark (42) positions himself in case the ball squirts away.

Wayne junior varsity nipped by Roncalli

The Wayne Junior Varsity lost a close one Friday night as Omaha Roncalli nipped the JV's 56-53.

The loss dropped the junior Blue Devils to 2-3 on the year. "Wayne had a chance to win the game with 15 seconds to go but the shot wouldn't fall and Roncalli came

down with the rebound. Jarod Wood led Wayne with 22 points and six rebounds. Dbug Larsen added 12 points and six rebounds.

The junior varsity will next be in action Jan. 9 when they travel to Madison.

area girls basketball



HOLLY PAIGE (with ball) leads a fast break against Laurel.

Bear defense proves stingy

Wayne sneaks past Laurel

It was the battle of two once-beaten teams Thursday night when the Laurel Lady Bears hosted the Wayne Lady Blue Devils.

In the end the Lady Blue Devils remained once beaten while Laurel dropped to 3-2 as the Lady Blue Devils nipped Laurel 41-38.

The contest was a game of halves. Laurel owned the first half leading 21-15 at intermission. In the final half Wayne rebounded and outscored the hosts 26-17.

Laurel Coach Pam Thies said the first half was the best her team had played all season.

"The girls played smart and didn't give Wayne many easy shots," she said. Another key to the early lead was free throws.

The Lady Bears connected on 9-14 free throws in the opening half. Wayne Coach Marlene Uhing said her team wasn't patient enough in the first half. She said the team had poor shot selection and the few good shots they did get wouldn't fall in the hole.

The Lady Blue Devils switched defenses in the second half and applied full-court pressure which bothered Laurel.

On offense Wayne began to work

the ball better and get it inside to Kacia Corbit and Shelly Pick. The two combined for 27 points, 17 by Corbit. Pick got eight of her 30 points in the fourth quarter. The senior also pulled down 15 rebounds.

Uhing said Corbit is still recovering from mono but she is getting stronger every game.

The Lady Blue Devils also did a good job on Gall Twiford. The Laurel senior finished the game with 21 points but most of those came in the first half.

Thies said she was happy with the way her girls played. Laurel led by two points at the end of the third quarter and had a chance to win the game in the waning minutes of the contest.

With 20 seconds left and Laurel trailing by four points Twiford was fouled and went to the line to shoot free throws. She missed her first shot and Wayne got the rebound and sealed the game.

Wayne outboarded Laurel 34-32. Twiford, Becky Christensen and Amy Adkins combined for 28 of Laurel's rebounds. Besides Pick's 15, Amy Luff added seven rebounds for Wayne.

The Wayne junior varsity also improved to 3-1 as they dumped Laurel 40-28. For Wayne Tonya Exleben and Andrea Marsh led the way with nine and eight points respectively. Julie Wessel added six rebounds.

In the first game of the triple header the Wayne freshmen won a two-quarter contest 19-4 over Laurel. Heidi Reeg scored 12 and Teresa Ellis added seven for the freshmen.

| | | | | | |
|--------|----|----|----|----|----|
| Wayne | 6 | 9 | 12 | 14 | 41 |
| Laurel | 11 | 10 | 8 | 9 | 38 |

| Wayne | FG | FT | F | TP |
|---------------|-----------|-------------|-----------|-----------|
| Nelson | 1 | 0-0 | 0 | 2 |
| Luff | 10 | 2-3 | 2 | 2 |
| Hansen | 1 | 0-0 | 0 | 2 |
| Engelson | 2 | 0-0 | 3 | 4 |
| Corbit | 7 | 3-7 | 5 | 17 |
| PICK | 5 | 0-0 | 4 | 10 |
| Paige | 0 | 1-2 | 2 | 1 |
| Bliven | 1 | 1-2 | 0 | 3 |
| Totals | 17 | 7-14 | 18 | 41 |

| Laurel | FG | FT | F | TP |
|---------------|-----------|--------------|-----------|-----------|
| Twiford | 7 | 7-15 | 3 | 21 |
| Dempster | 2 | 0-0 | 2 | 4 |
| Christensen | 3 | 0-0 | 2 | 6 |
| A. Adkins | 0 | 5-6 | 3 | 5 |
| S. Adkins | 1 | 0-0 | 5 | 2 |
| Totals | 13 | 12-21 | 16 | 38 |

| Area scores | |
|---|------------------------------------|
| HIGH SCHOOL GIRLS | HIGH SCHOOL BOYS |
| Allen 55, Newcastle 38 | Atkinson WH 73, O'Neill SM 52 |
| Homer 36, Bancroft-Rosalie 36 | Bancroft-Rosalie 55, Palmer 54 |
| Pierce 43, O'Neill 39 | Columbus 61, S. Sioux City 52 |
| Harrington C.C. 43, So. Sioux City North 40 | Crofton 59, Plainview 54 OT |
| Norfolk Catholic 49, Stanton 39 | Ewing 57, Bulle 52 |
| Wausa 76, Plainview 36 | Harrington CC 66, Creighton 56 |
| Wayne 41, Laurel 38 | Humphrey 81, Etgin 38 |
| Wilsner-Pilger 47, Oakland-Craig 34 | Newcastle 81, Allen 59 |
| Beemer 49, Snyder 42 | Norfolk 91, Lincoln East 82 |
| Bulle 49, Ewing 32 | North Bend 62, Pender 52 |
| Columbus LV 48, Howells 34 | Osmond 49, Laurel 45 |
| Crofton 50, Plainview 33 | Pierce 55, O'Neill 24 |
| Harrington 43, Wakefield 28 | Stanton 49, Dodge 57 |
| Neligh 40, Bloomfield 30 | Wausa 83, Wynot 49 |
| Pender 47, North Bend 32 | West Point CC 73, Oakland-Craig 66 |
| S. Sioux City 62, Columbus 49 | Heligh 48, Bloomfield 64 OT |
| Wausa 81, Wynot 45 | West Point 75, Scriber 72 |

Lady Eagles get win over Newcastle

By Gregg Dahlheim
Sports Editor

Things started out kind of slow for the Allen Lady Eagles Thursday night but in the end it was another Allen win as the Lady Eagles tripped Newcastle 55-38.

Kristi Chase led Allen, 5-1, with a game-high 18 points. Lana Erwin popped in 13 points and Tiffany Harder added 10 points.

Allen fell behind early and made a charge in the second half to secure the win.

The Lady Eagles first five possessions result in four turnovers and no points. It wasn't until Erwin hit two free throws with 5:15 left in the opening period that Allen got on the scoreboard. By the end of the quarter the hosts trailed 10-6.

Things got worse before they got better in the second quarter. A three-point play by Rhonda Kneiff gave the Lady Raiders a 19-9 lead with 4:30 left in the second quarter. Newcastle extended its lead to 21-9 before Allen got going.

Erwin scored the Lady Eagles first seven points before Harder added a three-point play with 3:49 to play in the half.

Allen started its run getting several Newcastle turnovers off of the Lady Eagle press. Allen outscored the Lady Raiders 14-4 in the final four minutes to cut the Newcastle lead to 25-23 at halftime.

Allen Coach Gary Troth said his team came out flat.

"Sometimes it's hard for them to maintain a high intensity level," he said. "We haven't played four good quarters yet."

In the second half it was all Allen. Troth's crew outscored the visitors 32-13 in the second half. They applied full-court pressure and Newcastle didn't have anybody who could consistently get the ball up court.

Allen took its first lead of the second half on a basket by Chase with 4:40 left in the third quarter. They held a one-point edge going into the final period before they erupted for 21 fourth-quarter points.

Troth said he would like to see his team control the tempo of the game without having to press. He said Erwin has to take charge of the team when they're not playing up to their potential.

Senior Kris Blohm wasn't in the starting lineup for the second straight game. The senior is out of action because of an illness. Troth said she should be ready to play when the Lady Eagles resume play Jan. 8 in tournament action at Ponca. Amy Noe filled in for Blohm with three points.



ALLEN'S KRISTI CHASE (13) gets loose for a jumper inside the key.

Allen held a slight rebounding edge as Barb Hansen, Chase and Harder each pulled down seven rebounds.

Kneiff led Newcastle with 13 points. Kim Maxey added eight points. The Allen JV's won the preliminary contest over Newcastle 24-19.

The win improved the junior Lady Eagles record to 4-0. Candace Jones and Missy Martinson led the way, with seven and six points respectively.

| | | | | | |
|-----------|----|----|----|----|----|
| Allen | 6 | 17 | 11 | 21 | 55 |
| Newcastle | 10 | 15 | 8 | 5 | 38 |

| Allen | FG | FT | F | TP |
|---------------|-----------|--------------|-----------|-----------|
| Erwin | 4 | 5-6 | 3 | 13 |
| B. Hansen | 4 | 0-3 | 4 | 8 |
| Blohm | 0 | 0-0 | 0 | 0 |
| Chase | 9 | 0-1 | 2 | 18 |
| Harder | 3 | 4-6 | 0 | 10 |
| Noe | 1 | 0-2 | 1 | 2 |
| L. Hansen | 1 | 2-2 | 5 | 4 |
| Boyle | 0 | 0-0 | 0 | 0 |
| Totals | 22 | 11-20 | 15 | 55 |

Seventh grade wins finale over Emerson Sacred Heart

The Wayne 7th grade boys basketball team closed out the season with a 17-13 win over Emerson Sacred Heart.

Kyle Dahl led the team in scoring

with six points. Matt Metz, David Ostercamp, Jason Claussen and John Murphy each added two points and Todd Fuelberth scored one point. The win evened the 7th grade's final record at 2-2.

The Hotel

In Wakefield
Phone 287-9026

HOLIDAY SPECIALS

Ron and his Hotel staff are having Customer Appreciation Days
Dec. 21-22-23-24.

Chicken Dinners \$3.75

Steak Dinners \$4.95

Evening Meals Serving 5 to 10 p.m.

Check Our Warm Case Beer Prices!
Too Low To Advertise!

Beer 60c
Drinks 70c

Closing at 6 p.m. Christmas Eve.
No food after 2 p.m. on Dec. 24th.

Have a Happy Christmas with family and friends.
We will be closed Christmas Day.

CHRISTMAS SPECIAL

FREE LUBE
W/OIL & FILTER CHANGE

POP 6-Pack Cans \$1.89

MUFFLERS
LIFETIME PROTECTION
FREE ESTIMATES
MOST CARS & LIGHT TRUCKS

Season's Greetings From **CLARKSON SERVICE**

114 Main, Wayne Phone 375-4420

HOLLYWOOD VIDEO

Wayne

Quasar
HQ Video Cassette Recorder

Step in for a look at a VCR that will turn your TV on and off and comes with \$130 free tape package.

We Have Great Prices On VCRs With Free Package

Step In And Pick Up A Current Movie On Gift Certificates On Sale

GAY THEATRE

Wayne

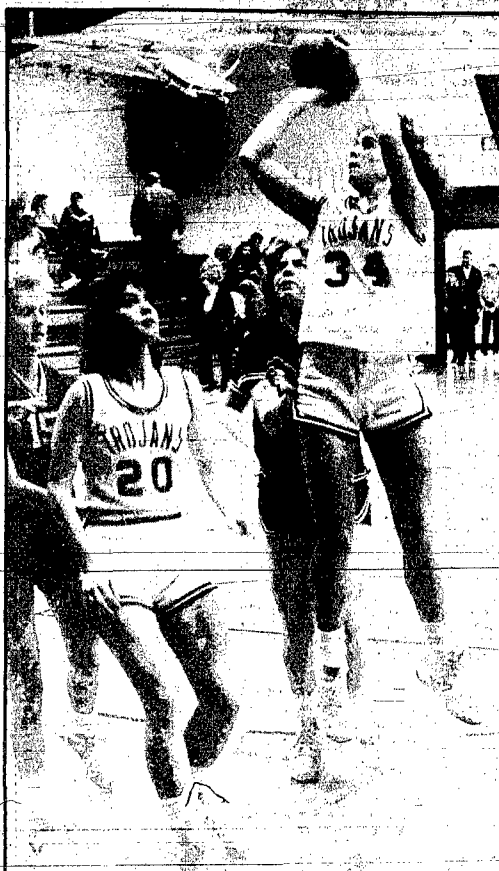
They saved the home and carried the nation's hopes... we all had to go through it... we were in New York.

DUNDEE
The man who came to play

Starts Dec. 19 - Nightly 7:30
Sat & Shows Fri-Sat, 7:00-11:15
Sunday Family Matinee 2 p.m.

WORLD'S GREATEST COMEDY ACTORS

Free Christmas Children's Matinee Saturday, Dec. 20 - 2 p.m.



TROJAN MARCI GREVE (34) pulls up for a jump shot as Karen Hallstrom (20) looks on.

Hartington girls turn back Trojans

By Gregg Dahlheim
Sports Editor

It was the same story Friday night for the Wakefield Lady Trojans.

The girls hosted Hartington and sent the Lady Wildcats home with a 43-28 win. The loss dropped Wakefield to 0-5 for the season.

Wakefield trailed 11-6 after the first quarter, 19-11 at halftime and 31-17 after three quarters.

Turnovers really hurt the Lady Trojans. After intermission the hosts turned the ball over the first four times they had the ball before they were able to score. In the meantime Hartington was slowly adding to its lead.

Wakefield Coach Ellie Studer said poor execution and rebounding was detrimental to her team. The hosts connected on only 9-35 shots from the field good for 25 percent. They hit 50 percent from the free-throw line connecting on 10-20.

Wakefield was beaten from the inside and outside. Hartington's perimeter game was hurting Wakefield especially the shooting of Jill Herbstheimer. The freshman finished with a game-high 18 points. If that wasn't enough, Kris Schom-

mer banged away from the Lady Wildcats inside.

Wakefield tried to put together a little run in the fourth quarter but 10 points was all the closer the Lady Trojans could get.

Studer said she was happy with the way her team played in the fourth quarter. She said the hard work showed in the Wakefield man-to-man denial defense in the final quarter.

The coach said the Lady Trojans still need to work on their passing game and not turning down the open shot.

Karen Hallstrom and Marci Greve led Wakefield with eight points apiece. Senior Stacey Kuhl finished with six points.

| | | | | |
|------------|----|---|----|-------|
| Wakefield | 6 | 5 | 6 | 11-28 |
| Hartington | 11 | 8 | 12 | 12-43 |

| Player | FG | FT | F | TP |
|---------------------|----|-------|---|----|
| Wakefield Hallstrom | 4 | 0-1 | 1 | 8 |
| Wakefield Wilb | 0 | 0-0 | 0 | 0 |
| Wakefield Schwarten | 1 | 0-0 | 0 | 2 |
| Wakefield Kuhl | 2 | 2-2 | 0 | 6 |
| Wakefield Salmon | 1 | 0-2 | 0 | 2 |
| Wakefield Nelson | 0 | 2-3 | 1 | 2 |
| Wakefield Fischer | 0 | 0-0 | 0 | 0 |
| Wakefield Greve | 1 | 6-8 | 2 | 8 |
| Totals | 9 | 10-20 | 6 | 28 |

Fouling mistakes foil Laurel's perfect record

Forty-six times play was stopped because of a foul when Laurel hosted Osmond Friday night.

That was also the difference of the game as Osmond nipped the Bears 49-45. Laurel outscored the Tigers by 10 points from the field but was outscored 19-5 from the charity stripe.

Laurel Coach Mark Hrabik said the game was frustrating for his team for several reasons. The Bears managed to hit just 28 percent of their field goals and 26 percent of their free throws.

Hrabik said his team got frustrated from its lack of offense and became a little more aggressive and was called for several foolish fouls.

To make matters worse it was Laurel's home opener. The Bears came into the game 2-0 mark. They really wanted to win the first home game and when things didn't go right they tried too hard, Hrabik said.

"Usually we have enough kids that can score so if a couple of kids are cold someone else can pick up the slack," the coach said. "But tonight everybody was cold."

The hosts had the chance to possibly put the game away in the second quarter. The Bears led by as

many as nine points but before the half ended Osmond had cut the lead to one, 25-24.

Brent Haisch led Laurel with 11 points. Rick Lage and Steve Schmitt followed with eight and seven points respectively.

The battle under the boards was also close. Each team was credited with 35 rebounds. Haisch was tops for Laurel with eight boards. Lage added seven rebounds.

"We should have probably won the game tonight," Hrabik said. "We did some things that we normally don't do and we were stiff in the ballgame. We'll do some things differently if we play the game again."

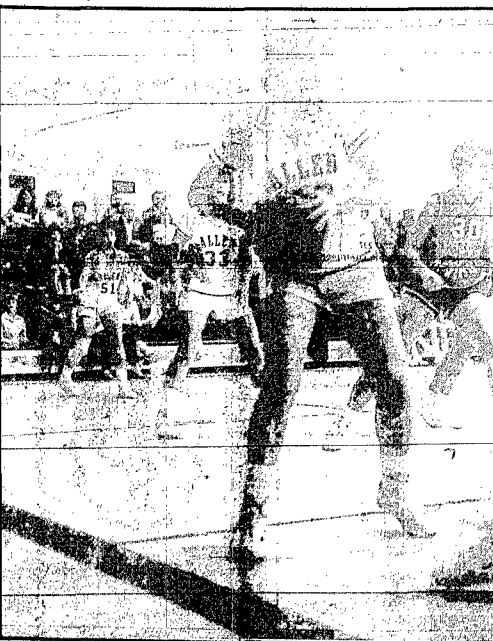
| | | | | |
|--------|---|----|----|-------|
| Laurel | 8 | 17 | 10 | 10-45 |
| Osmond | 6 | 18 | 11 | 14-49 |

| Player | FG | FT | F | TP |
|-------------------|----|-------|----|----|
| Laurel Manz | 2 | 0-0 | 5 | 4 |
| Laurel Schmitt | 3 | 1-4 | 4 | 7 |
| Laurel Marquardt | 3 | 0-2 | 4 | 6 |
| Laurel Cunningham | 0 | 2-4 | 3 | 2 |
| Laurel Haisch | 5 | 7-7 | 4 | 11 |
| Laurel Nixon | 1 | 0-1 | 1 | 2 |
| Laurel Lage | 4 | 0-2 | 4 | 8 |
| Laurel Schutte | 2 | 1-4 | 1 | 5 |
| Totals | 20 | 5-19 | 27 | 45 |
| Osmond | 15 | 19-35 | 19 | 49 |

sports slate

Monday, Dec. 22

| Girls' Basketball | Boys' Basketball |
|---------------------|---------------------|
| Wakefield at Osmond | Wakefield at Osmond |
| Winside at Wynot | Winside at Wynot |



EAGLE TIFFANY HARDER saves the ball from going out in the game against Newcastle.

nebraska game & parks

How about a fishing permit for Christmas?

Having trouble deciding on Christmas gifts for the outdoorsmen and women on your list? Here are a few ideas from the Nebraska Game and Parks Commission that are sure to be appreciated every day of the year.

Give your outdoor enthusiast a lifetime of enjoyment with a lifetime hunting or fishing permit. Though available only for Nebraska residents, the permits will still be valid even if the holder must leave the state at some future time. Lifetime hunting and fishing permits are only \$200 each, and the lifetime hunting/fishing combination permit is only \$400.

If you are working on a more modest budget this year, consider giving your hunter or angler 365 days of enjoyment with a 1987 hunting, fishing or combination permit complete with the necessary stamps. The resident hunting license is \$8.50; the resident fishing permit is \$9.50; the resident hunting/fishing combination permit is \$17.50; the 1987 habitat stamp is \$7.50 and the 1987 Trout Stamp is \$5. The 1987 Park Entry Permit is just \$10 and a duplicate permit is \$5.

Any Nebraskan would appreciate a subscription to award-winning NEBRASKAland Magazine. Each month NEBRASKAland presents a wealth of beautiful, full-color photographs and informative articles about life in Nebraska. In addition to the regular monthly issues,

subscribers also receive special, single-topic special editions such as the upcoming January/February 1987 issue "The Fish Book" which illustrates and describes the fish found in Nebraska waters and offers tips on how to catch them. NEBRASKAland subscription rates are \$12 for one year; \$23 for two years.

The 1987 NEBRASKAland Calendar of Color is a gift that will truly be used every day of the year. Spectacular full-color photos of Nebraska grace every month, and a few historic reminders of happenings of days gone by have been added to each month. For an inexpensive, yet very special gift, the Calendar of Color is just \$4 each, including bus rate postage. To guarantee Christmas delivery, add \$1.25 per calendar for first class postage.

For the special people on your list are special issues of NEBRASKAland magazine, all proven to be favorites of readers everywhere. The Wild Game Cookbook is \$3; The First Voices is \$5; Nebraska Rivers is \$5; Nebraska Through the Seasons is \$4; Fort Robinson Illustrated is \$6; and attractive hard-cover binders that hold an entire year of NEBRASKAland are only \$5.

All of these and many other exciting NEBRASKAland gifts are easily available. Send orders to NEBRASKAland gifts, c/o Nebraska Game and Parks Commission, Box 30370, Lincoln, Ne., 68503.

sports briefs

'Sweeper' results

Melodee Lanes hosted the seventh annual Pabst Blue Ribbon Sweeper Monday, Dec. 8.

The sweeper was sponsored by Wayne Distributing Inc. Bowlers from South Sioux City, Emerson, Pilger, Randolph, Wayne and elsewhere participated in the tournament. Wayne bowlers Lee Weander and Ric Barner placed in the singles competition.

The following are the results of the sweeper:
Team Event: 1. Harmony Lanes; No. 3-2. Marley's Standard; 3. Harmony Lanes No. 1; 4. Wausa Lanes; 5. Wolverson Hay Co.
Singles Event: 1. Bob Iverson; 2. Lee Weander; 3. Fred Kellogg; 4. Ric Barner; 5. Randy VonSeggern; 6. Leo Hellman.

Wieseler excels

Marine Pfc. Chris Wieseler of Wayne is continuing to enjoy athletics even after he graduated from Wayne-Carroll High School.

The 1985 graduate is a member of the Marine Barracks Bulldogs, a flag football team, at Roosevelt Roads Navy Base in Puerto Rico.

In November the Bulldogs won the Caribbean Tournament by winning four straight games. In one of the games Wieseler kicked a 55-yard field goal for the Bulldogs. Besides kicking, the Marine also plays linebacker and offensive guard. Wieseler was named captain of the defensive squad.

By winning the tournament the Bulldogs qualified for the South Atlantic Tournament in Kings Bay, Georgia, Nov. 10-14. The Bulldogs were beaten by the Charleston Hurricanes (Navy) and Kings Bay (Navy). Wieseler's team finished the season with a 12-6 record.

Wieseler, the son of Mr. and Mrs. Al Wieseler of Wayne, is member of the security force at Roosevelt Roads.

Winside trounced by opportunistic Bulldogs

It was a long night for Mark Freiburg and his Winside Wildcats Friday night as they were bounced by Coleridge 65-40.

The loss at home dropped Winside's season mark to 1-4 as its losing skid reached four games.

The game was lost for the hosts in the opening quarter. Coleridge outscored the Wildcats 19-4 enroute to a 32-17 halftime lead. After the disastrous start Winside played on an even par with the Bulldogs as they were outscored 46-36.

Turnovers highlighted the disappointing loss for Winside.

"We saw only one color when we were making passes tonight," Freiburg said. "On a lot of the turnovers we threw the ball right in their (Coleridge) hands. We're a better team than that what we showed tonight."

Winside came into the game with high hopes. Although the Wildcats had only losses to show in its last two games against Bancroft-Rosalie and Laurel, they played both teams tough and were in a position to win. But Fri-

day night they didn't put themselves in a winning situation.

Freiburg said the bright spot was the play of Mike Thies. The senior hit for 16 points. He collected nine rebounds and dished out a pair of assists. Thies also played well defensively at times, Freiburg said.

No other Wildcat finished in double figures. Chris Nau, Tim Jacobsen and Kevin Jaeger all finished with six points apiece. Jaeger added seven rebounds.

Coleridge was paced by Kelly Stallbaum. Stallbaum led all scorers with 24 points.

| | | | | |
|-----------|----|----|----|-------|
| Winside | 4 | 14 | 8 | 14-40 |
| Coleridge | 19 | 14 | 16 | 16-45 |

| Player | FG | FT | F | TP |
|------------------|----|-----|---|----|
| Winside Jacobsen | 2 | 2-3 | 2 | 6 |
| Winside Mundill | 1 | 0-1 | 3 | 2 |
| Winside Thies | 8 | 0-0 | 1 | 16 |
| Winside Voss | 1 | 0-0 | 1 | 2 |
| Winside Jaeger | 1 | 4-8 | 4 | 6 |
| Winside Nau | 3 | 0-0 | 0 | 6 |

| | | | | |
|-----------|----|------|----|----|
| Totals | 16 | 8-15 | 12 | 40 |
| Coleridge | 28 | 9-12 | 18 | 65 |

Rough game results in Allen tough loss

What started out to be a close game ended up not so close as Newcastle turned back winless Allen 81-39 on the Eagles' home court Friday night.

Allen trailed 10-6 after the first eight minutes and only 18-15 with about five minutes left in the first half. Then Newcastle went on a scoring spree and increased the halftime lead to 37-21.

Allen Coach Dave Uldrich said the game was a very rough and physical contest. Thirty eight fouls were whistled, 20 against the Raiders.

"I think the game got out of control," Uldrich said. "Strength was definitely a factor underneath the basket."

The coach said his team didn't play that bad in the opening half but they came out flat after halftime and got left in the dust. The Raiders scored 44 points in the third and fourth quarters.

Uldrich said his team always seems to have at least one bad quarter during a game. He said the Eagles haven't played a solid four quarters yet this season.

Max Oswald again led the team in scoring. The senior pumped in 12 points and added 14 rebounds. Jeff Gotch and Craig Hoffman tallied eight and seven points respectively.

Newcastle landed four men in double figures. They were led by Dan Addison's 15 points.

Uldrich said just because his team is losing some games early in the season he isn't about to jump overboard. He said if the kids keep a good attitude the Eagles could be competitive for the rest of the season.

| | | | | |
|-----------|----|----|----|-------|
| Allen | 6 | 15 | 5 | 13-39 |
| Newcastle | 10 | 27 | 24 | 20-81 |

| Player | FG | FT | F | TP |
|------------------|----|-------|----|----|
| Allen Hohenstein | 1 | 1-2 | 0 | 3 |
| Allen Kwankin | 1 | 1-3 | 2 | 3 |
| Allen Gotch | 3 | 2-2 | 5 | 8 |
| Allen Oswald | 5 | 2-2 | 1 | 12 |
| Allen Hoffman | 2 | 3-7 | 2 | 7 |
| Allen Chase | 1 | 0-0 | 1 | 2 |
| Allen L. Boswell | 1 | 2-2 | 0 | 4 |
| Totals | 14 | 11-19 | 18 | 39 |
| Newcastle | 32 | 17-24 | 20 | 81 |



In control

IN THE 185 pound match against South Sioux City's Mike Rich, Blue Devil Chris Luft recorded a major foul (6-0) that gave the Blue Devils the margin it needed to defeat the Cardinals, 34-33 last Thursday night.

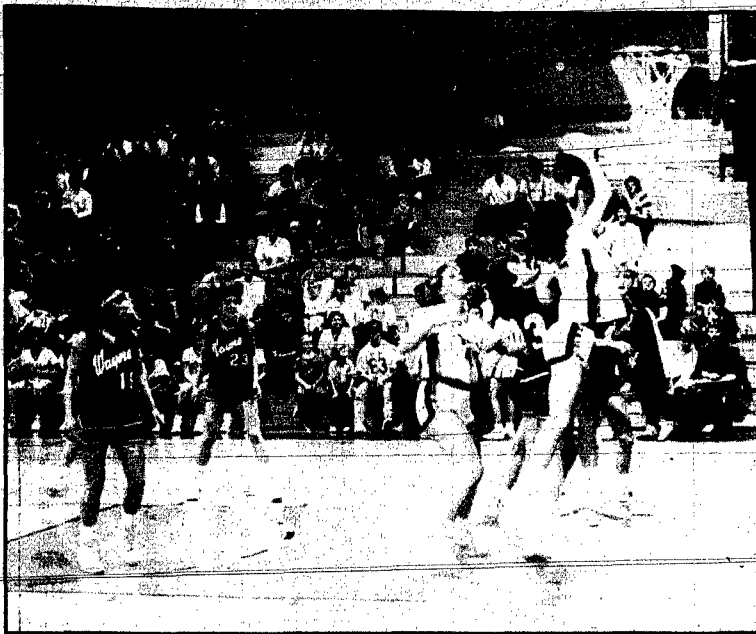
NEBRASKAland Calendars \$4.00 At The Wayne Herald

GRIESS REXALL COUPON
Developing & Printing
COLOR PRINT FILM

| | |
|------------------------------|--------|
| 12 Exposure Color Print Film | \$2.59 |
| 15 Exposure Disc Film | \$3.29 |
| 24 Exposure Color Print Film | \$4.59 |
| 36 Exposure Color Print Film | \$6.79 |

Coupon Expires January 1, 1987.

GRIESS REXALL



FROM CLOSE RANGE a Laurel player puts up a shot as Wayne defends in the Blue Devil 41-38 win last Thursday night over the Bears.

Team effort leads to Wildcat win

The Winside Lady Wildcats increased their winning streak to three games as they dumped Coleridge Friday night 49-27.

Winside, 3-2, put the game away early by outscoring the Lady Bulldogs 14-3 in the second quarter.

The first quarter was nip and tuck. Both teams went back and forth before the Lady Wildcats took a 9-6 lead at the end of the quarter.

In the third quarter Winside put the game on ice outscoring the visitors 14-3. Christi Thies sparked the Lady Wildcats by scoring six of her game-high 18 points in the quarter.

Coach Jill Stenwall said the win was a good team effort. She said everyone played well. Winside committed just 11 turnovers while forcing Coleridge into numerous miscues by applying full-court pressure.

Following Thies in the scoring parade was Kristi Miller. The sophomore added 12 points. Winside also outrebounded Coleridge. Ann Melerhenry led the squad with 14 rebounds. Tracy Topp added 11 boards and Thies grabbed nine rebounds.

Tina Smith led Coleridge with eight points.

| Winside | 9 | 14 | 14 | 12 | 49 |
|-----------|---|----|----|----|----|
| Coleridge | 6 | 3 | 3 | 15 | 27 |

| Winside | FG | FT | F | T |
|------------|----|----|---|----|
| Olson | 4 | 4 | 4 | 12 |
| Prince | 1 | 0 | 1 | 2 |
| Roeg | 3 | 2 | 2 | 5 |
| Melerhenry | 1 | 4 | 4 | 6 |
| Thies | 9 | 0 | 3 | 18 |

| Totals | 20 | 9-17 | 15 | 49 |
|-----------|----|------|----|----|
| Coleridge | 11 | 7-13 | 18 | 27 |

Men's Division

| | |
|-------------------|----------|
| Kearney State | 1-0, 6-3 |
| Missouri Southern | 1-0, 6-5 |
| Wayne State | 1-0, 5-6 |
| Washburn | 0-0, 7-2 |
| Emporia State | 0-0, 6-2 |
| Fort Hays State | 0-1, 6-3 |
| Pittsburg State | 0-1, 3-3 |
| Missouri Western | 0-1, 4-6 |

Wildcat Team Statistics

Wayne State is seventh in team offense averaging 69.8 points per game...fourth in team defense allowing 71.4 points per game...seventh in field-goal percentage hitting 43.9 percent...eighth in free-throw percentage hitting 64.6 percent.

Wildcat Individual Statistics

Vincent White is second in assists averaging five a game...Mark Gracy is fifth in free-throw percentage hitting 77.1 percent...Mike McNamara is 11th in rebounding averaging 6.6 a game...Scott Hurley is 11th in scoring averaging 16.5 points a game...Russ Rosenquist is 16th in scoring averaging 13.4 points a game.

Women's Division

| | |
|-------------------|----------|
| Kearney State | 1-0, 7-1 |
| Wayne State | 1-0, 6-4 |
| Missouri Southern | 0-0, 7-1 |
| Washburn | 0-0, 8-2 |
| Pittsburg State | 0-0, 7-5 |
| Emporia State | 0-0, 2-8 |
| Missouri Western | 0-1, 6-4 |
| Fort Hays State | 0-1, 5-8 |

Lady Wildcat Team Statistics

Wayne State is first in scoring offense averaging 79.9 points a game...seventh in team defense allowing 77.1 points a game...third in free-throw percentage hitting 67.6 percent...fifth in field-goal percentage hitting 42.9 percent.

Lady Wildcat Individual Statistics

Michelle Blomberg is first in assists averaging 5.6 a game...Linda Schnitzler is second in scoring averaging 20.3 points a game; second in free-throw percentage hitting 85.4 percent...fifth in assists averaging 3.6 assists a game and eighth in field-goal percentage hitting 49.4 percent...Dawnn Berni is third in rebounding averaging 10.6 rebounds a game, fourth in scoring averaging 18.6 points a game and fifth in field goal percentage hitting 51.8 percent of her shots...Kris Smith is fourth in rebounding averaging nine rebounds a game...Tonya Kelley is fifth in rebounding averaging 8.7 rebounds a game.

wayne bowling

| Hits n Misses | Monday Night Ladies | Thursday Night Couples |
|--|---|---|
| Essie Kethel, 195-517; Carol Brummond, 194; Wanda Hofeld, 182; Cheryl Henschke, 181-498; Margie Kahler, 181-185-529; Sue Wood, 228; Peg Pustison, 186-790; Sharon Junko, 180-502; Kathy Hochstetler, 191-505; Sandy Grono, 200-913; Geri Marks, 180. | Sheryl Darling, 197; Arlene Bennett, 480; Solly Hammer, 502; Sandy Grono, 181-180-526; Geri Marks, 183-496; Bev Sturm, 181-492; Frances Leonard, 185; Judy Szecseny, 197-531; Sandra Gathje, 494; Margie Kahler, 189-209; Angie Nicholson, 185; Toole Lave, 184; Jackie Nicholson, 489; Jo Ostrander, 200-566; Lois Neithard, 216-518. Split conversions: Frances Leonard, 4-7-9; Toole Lave, 6-7-9-10. | Warren Austin, 403; Sally Hammer, 492; Ella Lutz, 487. *Brown-Austin are the champions of the first half of the season. |
| Wednesday Nite Owls Don Leighton, 204; Vernoot Marotz, 219; Elmer Peter, 203; Morris Hanson, 202; Randy Bargholz, 228-383; Skip Deck, 205; Myron Schuett, 200; Chris Lueders, 214; Shannon Rospill, 217; Ted Ellis, 245-292-444. | Go Go Ladies Michelle Sokol, 194-495; Marge Kahler, 182-511; Linda Gambie, 192-513; Donna Freveri, 208; Jan Holdorf, 215-497; Georgia Janssen, 187-492; Ella Lutz, 181; Bev Sturm, 481. Split conversions: Nancy Gulli, 3-6-4-7; Sandra Gathje, 5-7; Phyllis Nelson, 3-9-10; Frieda Jorgensen, 3-7-10; Laurie Roberts, 3-10. | Community League Mark Gonsoborn, 217; Darrin Barner, 200; Larry Lueders, 215; Chris Lueders, 223-249-385; Lee Weander, 225-235; John Rebensdorf, 201-223-223-646; Todd Pospill, 218; Doug Ross, 201; Jeff Stratton, 205; Mike Ruwe, 221; Keni Rosicky, 237. *Tom's Body Shop was the champion of the first half of the season. |
| | City League Ken Loberg, 219; Mary Brummond, 212-389; Ric Barner, 202-384; Don Sund, 201; Herb Hansen, 200; Cliff Baker, 210-209-592; Gaylen Woodward, 204; Bryan Park, 204-387; Sid Preston, 208-221; Val Klenas, 219; Eldon Roberts, 203; Jim Maly, 215; Brian Roberts, 212-585; Kevin Maly, 217. | |

Washability...Plus...

Expert Advice. We pride ourselves on providing the special extras...knowledgeable application information, color counseling and product recommendations. That is why Pratt & Lambert quality paints are sold only through service-oriented, independent decorating products dealers like us.

Washability...plus Value. Quality paints such as Accolade...Pratt & Lambert's finest, velvety latex enamel for walls and trim...provide an elegant yet durable finish that will last longer. If you are interested in value for your money, come in and ask us why you should make the quality paint decision.

Make the Quality Paint Decision

PRATT & LAMBERT PAINTS...Architectural Finishes with Character... Since 1849

M.M. LESSMANN CO.

PAINT FARM

Phone 375-1200 2 1/2 Miles E. on Hwy. 35

BOWLING AT MELODEE LANES

Make Us Your Headquarters For Prescriptions & Photo Supplies

GRIESS REXALL

Monday Night Ladies

| WON | LOST |
|---------------------|---------------|
| Greenview Farms | 45 19 |
| Wayne Vet's Club | 36 28 |
| Jacques Valley Imp. | 36 28 |
| Midland Equip. | 35 29 |
| Wayne Campus Shop | 34 1/2 29 1/2 |
| Wayne Herald | 34 30 |
| Sheer Design | 31 1/2 32 1/2 |
| Country Nursery | 31 33 |
| Hanks Custom Works | 31 33 |
| Sweet | 29 35 |
| Roy's Locker | 21 43 |
| Corhart's | 20 44 |

High scores: Jeanette Swanson, 218; Margie Kahler, 522; Greenview Farms, 928; Wayne Campus Shop, 2622.

Wednesday Night Owls

| WON | LOST |
|---------------------|---------------|
| C&D G Men | 45 23 |
| Fourth Jug | 43 25 |
| Logan Valley Imp. | 39 1/2 28 1/2 |
| Jacques Seed | 36 32 |
| Comm'n'l State Bank | 35 23 |
| Melodee Lanes | 35 33 |
| Deck Haymovers | 34 34 |
| Electrolux Sales | 34 34 |
| Dale's | 23 35 |
| Roy's Locker | 27 41 |
| Fourth Jug II | 25 1/2 42 1/2 |
| Lee & Rustler's | 21 42 |

High Game: Chris Lueders, 255-633; C&D G Men, 265-2826.

Hits n Misses

| WON | LOST |
|----------------------|---------------|
| Siever's Hatchery | 48 20 |
| Bill's GW | 41 1/2 26 1/2 |
| T.W.J. Feeds | 40 1/2 27 1/2 |
| Pat's Beauty Salon | 39 29 |
| Carroll Lounge | 37 1/2 31 1/2 |
| Melodee Lanes | 36 1/2 31 1/2 |
| Wilson Seed | 35 1/2 29 1/2 |
| The Diamond Center | 35 33 |
| Popo's II | 34 34 |
| Patti's Extra Light | 29 39 |
| Don Goeden Constr. | 23 45 |
| Barb's Styling Salon | 9 59 |

High scores: Sue Woods, 206; Pex Paulson, 548; Sievers' Hatchery, 918; T.W.J. Feeds, 2604.

Go Go Ladies

| WON | LOST |
|-----------------|---------------|
| Pin Pals | 37 1/2 22 1/2 |
| Pin Splinters | 36 34 |
| Bowling Buddies | 34 1/2 25 1/2 |
| Bowling Bales | 34 24 |
| Rolling Pins | 31 29 |
| Lucky Strikers | 29 31 |
| Alley Cats | 23 22 |
| Pin Hitters | 22 37 |
| Hill and Misses | 22 37 |
| Road Runners | 20 40 |

The Pin Pals were the winners of the first half of the season.
High scores: Fran Nichols, 214-532; Lucky Strikers, 712; Pin Splinters, 1995.

Senior Citizens

On Tuesday, Dec. 16 27 senior citizens bowled in league action at Melodee Lanes. The Dan Sherry team defeated the Perry Johnson team 5,783 to 5,570.

High series and games were bowled by:

Gordon Nurenberger, 486-190; Norris Weible, 482-169; Dale Gutshall, 477-173; Frank Woehler, 476-188; Milton Matthews, 473-168; Don Sund, 472-162; Don Sherbahn, 470-164; Perry Johnson, 463-177; Winton Wallin, 460-169; and Art Brummond, 458-186.

On Thursday, Dec. 18 21 senior citizens bowled. The Frank Woehler team defeated the Winton Wallin team 4,506 to 4,477.

High series and games were bowled by:

Warren Austin, 521-179; Melvin Magnuson, 483-179; Gordon Nurenberger, 468-163; Milton Matthews, 458-160; Carl Mellick, 452-165; Art Brummond, 450-159; Gilbert Rauss, 450-161; and Winton Wallin, 449-160.

Thursday Night Couples

| WON | LOST |
|---------------------|-------|
| Brown Austin | 39 21 |
| Hammer-Nelson-Borer | 36 24 |
| John Miler | 33 27 |
| Carmen Ostrander | 30 30 |
| Luti-Hansen | 28 32 |
| Heilhold-Kinslow | 28 32 |
| Chang-Sever | 21 39 |
| Spahr-Rohn | 18 42 |

High scores: Warren Austin, 211; Jo Ostrander, 180; Heilhold-Kinslow, 419; Hammer-Nelson, 1776.

Community League

| WON | LOST |
|---------------------|-------|
| Tom's Body Shop | 44 20 |
| Bill's Dry Cleaning | 42 22 |
| Hollywood Video | 37 27 |
| Blue Light | 35 29 |
| Lumber Company | 35 29 |
| Golden Sun Feeds | 29 35 |
| T & E Electronics | 28 36 |
| L & B Farms | 26 38 |
| Tempo | 27 37 |
| Ghost Team | 8 52 |

High scores: Lee Weander, 255-715; Blue Light, 968-2807.

City League

| WON | LOST |
|----------------------|---------------|
| Wood P & H | 40 1/2 23 1/2 |
| Patti's Blue Ribbon | 36 1/2 27 1/2 |
| Melodee Lanes | 36 1/2 27 1/2 |
| Vet's Club | 36 1/2 27 1/2 |
| Mrsny's San. Serv. | 36 28 |
| Tris Travel | 35 29 |
| Black Knight | 32 32 |
| American Family Ins. | 29 1/2 34 1/2 |
| Clarkson Service | 28 1/2 35 1/2 |
| Wayne Greenhouse | 26 38 |
| K.P. Construction | 25 39 |
| L & B Farms | 22 42 |

High scores: Chris Lueders, 222; Sid Preston, 623; Black Knight, 968-2754.

East Hwy. 35

WAYNE DISTRIBUTING

IMPORTED

HOLLAND BEER

Phone 375-3085

laurel news

CHURCHES SCHEDULE CHRISTMAS SERVICES

Churches are planning special programs and worship services during the Christmas season.

Mary's Catholic Church will have a Christmas eve midnight mass with the Rev. Norm Hunke officiating. The Christmas Day mass will be at 9 a.m.

The United Methodist Church scheduled its Christmas program on Sunday, Dec. 21 at 7:30 p.m., followed with a fellowship hour. There will be a Christmas eve candlelight service at 6:30 p.m. with the Rev. Fred Andersen officiating.

The Logan Center United Methodist Church program is

scheduled Tuesday, Dec. 23 at 7:30 p.m.

Pageant practice at Immanuel Lutheran Church is scheduled Tuesday, Dec. 23, with the program to be presented on Christmas eve at 6:30 p.m. The Rev. Mark Miller will officiate at a worship service with communion on Christmas morning at 10 a.m.

The Sunday school program at the Presbyterian Church was scheduled during the 10:45 a.m. worship service on Sunday, Dec. 21.

The Christmas eve service with communion will be held at 10 p.m. and will include congregations from both the Belden and Laurel churches. The Rev. Thomas Robson will officiate.

The United Lutheran Church pro-

gram also was scheduled Sunday, Dec. 21 at 7:30 p.m. There will be a candlelight service on Christmas eve at 9 p.m., and a Christmas morning worship service at 10 a.m. with the Rev. Kenneth Marquardt officiating.

PANCAKE DINNER

Over 800 residents of the Laurel community attended a pancake dinner sponsored by the Laurel Chamber of Commerce on Dec. 13 in the Laurel city auditorium.

Youngsters were visited by Santa Claus. Santa's helper, Alvin Krel of Belden, provided rides on his bobbed to all interested adults and children.

Prizes were drawn for over \$240 in Chamber of Commerce gift certificates and produced 21 winners who had registered at participating

Chamber businesses since the beginning of December.

Winners in the "12 Days of Christmas" were: Dennis Forster, Sharon Van Cleave, Dwight Paulsen, Luella Smith, Peg Brasser, Greg Ullmer, Anne Roland, Arnold Relfenauer, Rex Easted, David Stone, Audrey Hinrichs, Ruby Smith, Todd Twilford, R. W. Carlson, Kerry Frahm, Melvin Smith, Lillian Hichert, Joan Hartman and Wes Bloom.

Winners of poinsettia plants which decorated the auditorium were: George Kastrop, Jane Cochran, Doris Manz, Wanda Jones, Bernard Asbra and Bernita Suber.

CAROLING PARTY

A caroling party was held at the

Laurel United Methodist Church on Dec. 17 with over 35 persons participating.

The carolers sang at several homes in the Laurel community.

A covered dish supper was served afterward at the church. Devotions were led by Mrs. Mary Ann Ward and Mrs. Ellen Erwin.

SENIOR CITIZENS CALENDAR

Monday, Dec. 22: Center open from 10 a.m. to noon, and from 1 to 5 p.m.

Tuesday, Dec. 23: Center open from 10 a.m. to noon, and from 1 to 5 p.m. No open bridge.

Wednesday, Dec. 24: Center open from 10 a.m. to noon, and from 1 to 5 p.m.

Thursday, Dec. 25: Center closed in observance of Christmas.

Friday, Dec. 26: Center open from 10 a.m. to noon, and from 1 to 5 p.m. Pinch and canasta at 2 p.m.

HILLCREST CARE CENTER CALENDAR

Monday, Dec. 22: Movie, 2 p.m.

Tuesday, Dec. 23: Harry Wallace at the organ, 10:30 a.m.; ball and fun, 2 p.m.

Wednesday, Dec. 24: Sing-a-long, 9:30 a.m.; bingo, 2 p.m.; last lighting of advent candle, 5:45 p.m.

Thursday, Dec. 25: Merry Christmas!

Sunday, Dec. 28: Immanuel Lutheran Church services, 2 p.m.; Minard French's birthday.

leslie news

EVEN DOZEN CHRISTMAS PARTY

Even Dozen Club held its Christmas supper and party on Dec. 22 at The Hotel in Wakefield. Ten members attended and husbands were guests.

Pitch served as the evening's entertainment with prizes going to Dorothy and Dean Meyer, high, Verona Henschke and Dan Dolph, low, and Elmer Bargholz, traveling. Cookies and coffee were served at the close of the evening.

SERVE ALL

Eleven members of Serve All Home, Extension Club attended a Christmas supper and party on Dec. 9 at The Hotel in Wakefield.

Gertrude Ohlquist and Bernice Kaufmann conducted pencil games, with prizes being won by Ruth Boeckenhauer and Virginia Leonard. A grab bag gift exchange was held.

A thank you message was read from Wakefield Health Care Center. Edna Hansen will be the Jan. 21 club hostess.

FARM FANS

Ten members of Farm Fans Home Extension Club and their spouses met at The Hotel in Wakefield for a Christmas supper and party on Dec. 10.

Receiving pitch prizes during the evening were Elaine Hansen and Dale Hansen, high, Diane Larson and Howard Greve, low, and Corliss Krumesark, traveling. A grab bag gift exchange was held.

Next meeting will be Jan. 15 at 10 a.m. with Diane Larson as hostess.

Elaine Hansen will present a craft lesson.

MEN'S CLUB

The Men's Club of St. Paul's Lutheran Church met Dec. 9. Plans were made for a Christmas lighting ceremony on Dec. 17 as part of the advent service.

The Men's Club furnished lights for a tree outside the church.

Albert L. Nelson and Elaine Nelson served lunch.

LADIES AID

The Ladies Aid of St. Paul's Lutheran Church met Dec. 11 for a

no-host Christmas luncheon. Fifteen members and the Rev. Ricky Bertels attended.

Dorothy Meyer was chairman and Janelle Nelson co-chairman of the group in charge.

A skit, "Lighting of the Advent Candles," was presented and Christmas pencil games were played. Secret sisters were revealed with a gift exchange.

The December birthday is Elaine Hansen, and anniversaries are Marilyn Hansen and Delores Helgren.

Next meeting will be Jan. 6 with Delores Helgren as hostess.

School District 25 presented a Christmas program on Dec. 12. Santa Claus gave treats to the children, and a cooperative lunch was served.

The Kenneth R. Dowling family left Dec. 9 for Beville, Texas where Kenneth will be stationed with the U. S. Navy Air Corp.

The Clarke Kals attended funeral services at Grace Lutheran Church in Neligh on Dec. 3 for Dale Nuttelman.

Other area residents attending services were Terry, Kevin, Brian and Shawn Kal, and the Marvin Bakkers.

winside news

SCOUTS

Nine Bear and Wolf Cub Scouts met Dec. 16 with leaders Joni Jaeger and Kathy Holtgrew.

The Bears worked on their money management badge by going to the grocery store for comparative shopping. The Wolfs worked on their wildlife badge and had an art lesson. Shawn Magwire served treats.

Next meeting will be a Christmas party on Dec. 23 at 3:45 p.m. at the fire hall. Greg Mundt will bring treats.

The Wayne County Pork Producers Association has information displays, samples and pork specials at Ray's Locker in Winside from now through Dec. 24.

JOLLY COUPLES

Marvin Dunklaus of Wayne hosted the Dec. 16 meeting of Jolly Couples Club. The Leo Hansens and Kenneth Dunklaus were guests.

Prizes were won by the Don Wackers and the Lloyd Behmers. Next meeting will be Jan. 20 in the Fritz W. home.

On Sunday, Trent was honored with a decorated cake from his grandparents, the Virgil Rohlfis of Omaha, during the baptismal celebration of his brother, Taylor Suehl.

Attending were the Rohlfis and grandparents Mr. and Mrs. Billy Suehl of Hoskins, great grandparents Mr. and Mrs. Meyer of Wayne, Deb Llenemann and Dwayne Suehl of Hoskins, Arlene Zoffka, the Steve Suehl family, the Herb Jaegers and the Terry Nelson family, all of Winside, and LeNeil Zoffka of Scribner.

Trent's birthday was Dec. 12. He is the son of Keith and Lori Suehl of Hoskins.

WAYNE CITY COUNCIL PROCEEDINGS

November 25, 1986

Wayne City Council met in regular session on November 25, 1986 at 7:30 p.m. Present: Mayor Steve Adams, Aldermen: Duell, Johnson, Pedersen, Barely, Hansen, Atwood, Administrator Klotzer, Clerk Brummond. Absent: Council Members Filler and Decker.

Minutes of November 10, 1986 were approved. Claims were approved for payment as listed below:

ORDINANCE NO. 64-23

AN ORDINANCE AMENDING MUNICIPAL CODE SECTION 10-209.

BE IT ORDAINED by the Mayor and the City Council of the City of Wayne, Nebraska:

Section 1. That Chapter 10, Article 2, Section 10-209 of the Municipal Code of Wayne, Nebraska, be amended as follows:

"Handbills Placing in Vehicles. No person shall distribute, deposit, place, throw, scatter, cast any handbill or upon any automobile or other vehicle on the streets of this municipality; provided, that the provisions of this section shall not be deemed to prohibit the placing of any handbill or other occupant of any automobile or other vehicle who will accept it, and further provided, this provision shall not be deemed to prohibit the municipality from placing any tickets, traffic infractions, or notices in or upon any automobile."

Section 2. All ordinances or parts of ordinances in conflict herewith are repealed.

Section 3. This ordinance shall be in full force in effect from and after its passage, approval and publication as required by law.

Passed and approved this 9th day of December, 1986.

THE CITY OF WAYNE, NEBRASKA
By Mayor
Attest: Carol J. Brummond, CMC
City Clerk (Publ. Dec. 22)

NOTICE PR66-35

Estate of Florence Jenkins, Deceased.

Notice is hereby given that on November 26, 1986, in the County Court of Wayne County, Nebraska, the Registrar issued a written statement of Informal Probate of the Will of said Deceased and that Robert Jenkins whose address is Rural Route 2, Wayne, Nebraska 68787 has been appointed Personal Representative of this estate. Creditors of this estate must file their claims with this Court on or before February 10, 1987, or be forever barred.

(s) Pearl A. Benjamin
Clerk of the County Court (Publ. Dec. 15, 22)
8clips

carroll news

ANNUAL CHRISTMAS MUSICAL PRESENTED

Students of Carroll Elementary School, grades kindergarten through four, presented their annual Christmas musical on Dec. 15, entitled "Seeing Snow Flakes."

Thirty-eight students participated in the program, under the direction of Cheryl Kopperud.

Santa Claus (Ed Sandahl) visited during the evening and distributed Christmas goodies to students and pre-school youngsters of the community. The treats were compliments of the Carroll Business Club.

Adolph Rohlfiff will host the Jan. 21 meeting.

Mrs. Esther Hansen was honored for her birthday when the Allen Frahmns entertained at supper on Dec. 16. Other guests were the Marilyn Kennys and the Ervin Willers.

Mrs. Lyle Cunningham entertained at coffee Dec. 15 to honor the birthday of Mrs. Russell Hall. Other guests were Mrs. Ernest Junck, Mrs. John Rethwisch, Mrs. Harry Nelson, Mrs. Clarence Morris and Mrs. Arnold Junck.

Mrs. Lyle Cunningham of Carroll and Mrs. David Luft of Wayne went to Sioux City, Dec. 11 where they visited Mrs. Clara Meier.

The Bill Burris family has returned from a 10-day vacation to Florida.

They visited Mrs. Burris' parents, the Warren Holtgrews of Nokomis, and her sister, Della Holtgrew of Punta Gorda. They also visited the Ringly Museum in Sarasota and Myakka State Park.

Brad Carlson home. The Owens family were Saturday overnight guests there.

The Michael Carlsons of Dodge City, Kan., also were guests. Brad and Michael are brothers of Mrs. Owens.

Alan Schnoor, grandson of the Vernie Schnoors, and friend Joe Copchek, both of Fort Benning, Ga., spent Dec. 6-7 in the Vernie Schnoor home.

On Dec. 6, they all went to Worthington, Minn. where they visited in the Jerry Schnoor home.

On Dec. 7, they attended a Kahny family pre-Christmas reunion at Pierce. Approximately 30 persons attended the reunion in the Lions Club room.

The Vernie Schnoors went to Omaha on Dec. 17 with Vernie had a medical checkup. They returned home that evening.

NOTICE OF FORMAL HEARING FOR COMPLETE SETTLEMENT TO PROBATE A WILL, DETERMINE HEIRSHIP, AND FOR DETERMINATION OF INHERITANCE TAX

County Court of Wayne County, Nebraska. Estate of Rose Granfield, Deceased. No. PR66-24.

Notice is hereby given that the Personal Representative has filed a final account and report of his administration, a formal closing petition for complete settlement for formal probate of will of said deceased, for determination of heirship; and a petition for determination of inheritance tax which has been set for hearing in the Wayne County, Nebraska, Court on January 9, 1987, at 11:00 o'clock a.m.

(s) Pearl A. Benjamin
Clerk (Publ. Dec. 15, 22)
6clips

APPLICATION NO. GW-1846

Carroll Feed & Grain, Inc., Carroll, Nebraska, has made application for increased storage covering in part, Facility "P", located approximately 2 miles East and 1/2 mile South of Carroll, Facility "G", located approximately 1 1/4 miles South and 1 mile West of Carroll, and Facility "H", located approximately 2 3/4 miles East and 1 mile South of Carroll, Nebraska. All protests to this application must be filed with the Executive Secretary of the Public Service Commission, 301 Centennial Mall South, Lincoln, Nebraska, prior to 5:00 p.m. January 5, 1987. If no protests are received by that date, the application will be processed administratively in accordance with Rule 018 of the Commission's Rules of Procedure.

(Publ. Dec. 15, 22)
6clips

carroll news

SENIOR CITIZENS

Seventeen were present Dec. 15 when Carroll Senior Citizens met at the fire hall. Hostess was Mrs. Paula Hustan.

The group signed cards for Mrs. Lyle Rethwisch and Mrs. Louise Boyce. Mrs. Perry Johnson was honored with the birthday song.

Receiving card prizes were Mrs. Adolph Rohlfiff, Mrs. Arthur Cook and George Johnston.

Dora Stolz will host the Dec. 22 afternoon of cards.

GST BRIDGE

The Wayne Kerstines entertained GST Bridge Club on Dec. 13. Guests were the Don Harmers of Fremont.

Prizes were won by the John Bausens, Mr. and Mrs. Dean Owens and the guests.

Hosts Jan. 24 will be the Merlin Kennys.

CLUB HAS GUEST

Mrs. Mable Billheimer was a guest when the Happy Workers Club met recently with hostess Mrs. Arthur Cook.

Prizes went to Mrs. Billheimer, Mrs. Cliff Rohde and Marie Bring. A Christmas gift exchange was the feature.

Marie Bring will serve as activities chairman for the new year. Mrs.

Deadline for all legal notices to be published by The Wayne Herald is as follows: 5 p.m. Monday for Thursday's newspaper and 5 p.m. Friday for Monday's newspaper.

NOTICE OF FORMAL HEARING FOR COMPLETE SETTLEMENT TO PROBATE A WILL, DETERMINE HEIRSHIP, AND FOR DETERMINATION OF INHERITANCE TAX

County Court of Wayne County, Nebraska. Estate of Rose Granfield, Deceased. No. PR66-24.

Notice is hereby given that the Personal Representative has filed a final account and report of his administration, a formal closing petition for complete settlement for formal probate of will of said deceased, for determination of heirship; and a petition for determination of inheritance tax which has been set for hearing in the Wayne County, Nebraska, Court on January 9, 1987, at 11:00 o'clock a.m.

(s) Pearl A. Benjamin
Clerk (Publ. Dec. 15, 22)
6clips

APPLICATION NO. GW-1846

Carroll Feed & Grain, Inc., Carroll, Nebraska, has made application for increased storage covering in part, Facility "P", located approximately 2 miles East and 1/2 mile South of Carroll, Facility "G", located approximately 1 1/4 miles South and 1 mile West of Carroll, and Facility "H", located approximately 2 3/4 miles East and 1 mile South of Carroll, Nebraska. All protests to this application must be filed with the Executive Secretary of the Public Service Commission, 301 Centennial Mall South, Lincoln, Nebraska, prior to 5:00 p.m. January 5, 1987. If no protests are received by that date, the application will be processed administratively in accordance with Rule 018 of the Commission's Rules of Procedure.

(Publ. Dec. 15, 22)
6clips

In charge of serving Christmas cookies and coffee were the Robert Halls, the Les Lages, the Jerry Fredricksons, Mr. and Mrs. Mark Tietz and Diane Ross.

CLUB HAS GUEST

Mrs. Mable Billheimer was a guest when the Happy Workers Club met recently with hostess Mrs. Arthur Cook.

Prizes went to Mrs. Billheimer, Mrs. Cliff Rohde and Marie Bring. A Christmas gift exchange was the feature.

Marie Bring will serve as activities chairman for the new year. Mrs.

CLUB HAS GUEST

Mrs. Mable Billheimer was a guest when the Happy Workers Club met recently with hostess Mrs. Arthur Cook.

Prizes went to Mrs. Billheimer, Mrs. Cliff Rohde and Marie Bring. A Christmas gift exchange was the feature.

Marie Bring will serve as activities chairman for the new year. Mrs.

CLUB HAS GUEST

Mrs. Mable Billheimer was a guest when the Happy Workers Club met recently with hostess Mrs. Arthur Cook.

Prizes went to Mrs. Billheimer, Mrs. Cliff Rohde and Marie Bring. A Christmas gift exchange was the feature.

Marie Bring will serve as activities chairman for the new year. Mrs.

CLUB HAS GUEST

Mrs. Mable Billheimer was a guest when the Happy Workers Club met recently with hostess Mrs. Arthur Cook.

Prizes went to Mrs. Billheimer, Mrs. Cliff Rohde and Marie Bring. A Christmas gift exchange was the feature.

Marie Bring will serve as activities chairman for the new year. Mrs.

CLUB HAS GUEST

Mrs. Mable Billheimer was a guest when the Happy Workers Club met recently with hostess Mrs. Arthur Cook.

Prizes went to Mrs. Billheimer, Mrs. Cliff Rohde and Marie Bring. A Christmas gift exchange was the feature.

Marie Bring will serve as activities chairman for the new year. Mrs.

Our Family Can Help Save Your Family Up To \$75.

Now, more than ever, it pays to put an Apple™ computer under your tree. Because when you take home any member of the Apple family of personal computers to your family, you'll save like never before.

We call it "Apple Pays Half." You'll call it a bargain. Because when you purchase a qualifying Apple II or Macintosh™ Basic System™ from an authorized Apple dealer, Apple pays half of up to \$500 on Apple branded peripherals and software. That includes a printer, a disk drive, a modem and more.

Next, you'll receive an Apple gift box. This valuable kit filled with 3M computer accessory products worth up to \$75. Is yours free.

And, you'll receive up to \$400 in special coupon offers from leading Apple software developers. Which means, you'll save on the products you'll need to expand your system as your family's needs change and grow.

It's a special bonus from our family to your family... just in time for the holidays! Hurry in, offer expires January 10, 1987.

SAVE ON VICTOR CALCULATOR 1242 Regularly \$60.00

CHRISTMAS SPECIAL \$44.00

Office Connection

COMPUTERS AND OFFICE PRODUCTS

613 Main St. Wayne, NE (402) 375-1107

be a Christmas Santa even if you're a little short

Don't let the lack of ready cash stop you from having a merry Christmas. Our holiday loans afford you the funds you need to play Santa the way you want, and offer repayment terms that won't hang you up the rest of the year. Just see our loan officers for the facts and figures.

The State National Bank and Trust Company

Wayne, NE 68787 • 402-375-1100 • Member FDIC

Main Bank 110 West 1st • Drive-In Bank 10th & Main

BUSINESS & PROFESSIONAL DIRECTORY

Wakefield News

NEWS FROM THE SENIOR CENTER
 Betty Lou Hadley, intern minister at Salem Lutheran Church, spoke at the Wakefield Senior Citizens Center on Dec. 11.
 Mrs. Hadley talked about "Life's Surprises" and told of her background and her calling into the ministry.
 On Dec. 12, Alice Johnson and Terri Samuelson brought their fifth and sixth graders to the center to sing Christmas songs. Phyllis Hix accompanied the singing.
 The Elderberry Singers from the Emerson Senior Citizens Center, accompanied by Lou Fry, also entertained on Dec. 12. Santa Claus was also a guest.
 The Swedes had their day at the center on Dec. 15. Eighty-four persons enjoyed a smorgasbord meal and a portrayal of Santa Lucia by Johanna Wilh. Johanna is a foreign exchange student from Sweden and told of holiday traditions in her country.
 Santa Claus was at the center on Dec. 16 to answer the telephone.
 Also visiting the center on Dec. 16 were students of the Petals and Pine

Pre-School who entertained with songs, recitations and a rhythm band.

SENIOR CALENDAR
 Monday, Dec. 22: Exercise, 9 a.m.; music by John Rissell and Harold Knoop, 12:45 p.m.
 Tuesday, Dec. 23: Meditation by the Rev. Ricky Bertels, 12:45 p.m.
 Wednesday, Dec. 24: Exercise, 9 a.m.; brunch, 10 a.m. The menu will include egg-cheese casserole, fruit cup, tomato juice, muffins and butter, and a cinnamon roll; the center will close at 1 p.m.

MEAL MENU
 Monday, Dec. 22: Hamburger steak with brown gravy, mashed potatoes, carrots, fruit salad, bread and butter, pineapple.
 Tuesday, Dec. 23: Liver and onions or fish, potato casserole, sunshine salad, tomato medley, bread and butter, pears.
 Wednesday, Dec. 24: Brunch.
 Thursday, Dec. 25: Center closed in observance of Christmas.
 Friday, Dec. 26: Creamed chicken on biscuits, beefs, five-cup salad, apple juice, dessert.

Wayne-Carroll Schools

German Club Christmas Parties
 by Jill Nelson
 This time of year is a busy time for the German Club. They planned to attend two Christmas parties besides their own in two weeks. On Dec. 3 they attended the Wayne State College Christmas party and ate supper up there. Camilla and Berit, our two foreign exchange students, talked about how they celebrate Christmas in Denmark and Norway. Then the German Club sang songs with the WSC German Club.
 On Dec. 7 the club planned to attend Dana College's Christmas Festival, but the weather didn't permit. On Dec. 8 they had their own Christmas Party. The German Club students invited their families. They sang some German songs and had Camilla tell about Christmas in Denmark.
 They gave the little kids a Toblerone, Swiss chocolate, and the German students got a gift from Mrs. Zahntiser. Then everybody had punch and cookies.

written-in Spanish-in-the-boxes and snapshots of themselves plus a map of the United States pointing out the location of Wayne, Nebraska. Students hope that these small gifts will help bring happiness to some needy child in 1987.

Students who participated include: Amy Bliven, Teresa Ellis, Tonya Eisberry, Kelly Fleming, Michelle Fluent, Tammy Griesch, Will Cross, Jean Hansen, Kara Janke, Tony Johnson, Karmyn Koenig, Betsy Lebsack, Jeff Luft, Robln Luft, Suzy Luft, Chere McDonald, Dana Nelson, Holly Paige, Heidi Reeg, Scott Sherer, Kathy Stalling, Julie Wessel, Heidi Wjedl, Chris Mendel, Amy Anderson, Kella Echtenkamp, Terri Gehner, Larry Hintz, Brenda Janke, Vicki Meyer, Jeanne Morris, Marc Rahn, Jed Reeg, Susan Sorensen, Beth Stoltenberg, Julie Struve, Eunice Wacker, Chris Wiseman and Dan Wurdinger.

Jazz Band
 by Tracy Gamble

The Jazz Band at the Wayne-Carroll High School consists of 20 members. The director of the Jazz Band is Brad Weber. The members in the Jazz Band by sections are: Alto Sax's - Jeff Simpson, Jed O'Leary; Tenors - Bethany Keidel and Kris Rhode, and one Bari Sax played by Denna Nichols. The trumpet section consists of Seth Anderson, Larry Engelson, Eric Runeslad, Larry Hintz, Martin Rump and Jeff Green. Jeff also plays Guitar. The slide trombone section is made up of Stuart Rathwisch, Jed Reeg and Jason Liska, and the Valve Trombones are John Hartman and Eric Liska.

Other members of the Jazz Band are Brett Fuetberth - Piano, Sarah Glinesman - Key Board Bass, Marc Rahn - Drums and Karmyn Koenig - the Flute. Mr. Weber said the Jazz Band will be participating in the Wayne State Jazz Festival in February, the NTCC Jazz Festival in March and the Midland Jazz Festival in April.

Spanish Students Send Gifts
 Wayne High fourth and fifth period Spanish I and Spanish II classes sent Christmas boxes of toys and clothes to "Friends of the Americas," a philanthropic group founded by Rep. Louis Jenkins, a member of the Louisiana House of Representatives. "Friends of the Americas" hoped to distribute 100,000 boxes during the Christmas season this year.

The boxes provide person-to-person relief and are destined for needy children in Honduras, Guatemala, Mexico, Costa Rica and Colombia. Recipients of these boxes of Christmas love last year included children who survived the earthquakes in Mexico City, refugee children from Nicaragua and displaced Honduran children and orphans. The boxes will be shipped by Dec. 20 to Latin America where American volunteers will deliver them to needy children for Christmas.

Class members enclosed letters

PILGER SAND & GRAVEL
 wishes to thank everyone for their patronage during this last year. Wishing everyone a Merry Christmas and a Happy New Year!
RON & MARILYN WILLERS
 396-3303

DECEMBER SPECIAL
Boneless Ham
 Free with any of these purchases

- 3 ton of concentrate feed mineral
- 1 ton of mineral
- 4 ton of complete feed
- 1 ton of premix


Nutrena Feed Store
 115 W. 1st Wayne, NE
 375-5261

Nutrena Feeds
 The way to feed your operation

ACCOUNTING

Max Kathol
 Certified Public Accountant
 Box 389
 108 West 2nd
 Wayne, Nebraska
 375-4718

INSURANCE

First National Agency

 301 Main
 Phone 375-2511

PHYSICIANS

BENTHACK CLINIC
 Robert S. Benthack, M.D.
 Benjamin J. Martin, M.D.
 Gary J. West, P.A.C.
 215 W. 2nd Street
 Phone 375-2500
 Wayne, Nebr.


SERVICES

LOIS' SILVER NEEDLE
 Mens & Womens Altering
 Lower Level Kuhn's Dept. Store.
 Open Wednesday thru Saturday
 9 a.m. to 2 p.m.



CHIROPRACTOR

Chiropractic Health Center of Wayne
 Office Hours: Monday-Friday
Dr. Darrell Thorp, D.C.
 112 E. 2nd Street
 Mineshaft Mall
 Wayne, NE
 375-3399
 Emergency 375-3351


Independent Agent
DEPENDABLE INSURANCE
 FOR ALL YOUR NEEDS
 Phone 375-2696
N.E. Nebr. Ins. Agency
 Wayne
 111 West 3rd


That's about the size of it.
 PRECISION HEARING CANALS aid fit into your ear canal. So they you may forget you're wearing it. But it's a big on performance and quality. Come try one in.
Robert Wylie
 Precision Hearing Aids, P.C.
 For Hearing Test in Home or Office, Call (402) 371-8455
 1109 Norfolk Avenue
 Norfolk, NE 68701

Wayne MINI-STORE
 Storage Bins
 5'x10'-10'x10'
 10'x20'-10'x30'
 All 12' High
 Call:
Roy Christensen
 375-2767
 OR
Jim Mitchell
 375-2140

CONSTRUCTION

DENNIS MITCHELL CONSTRUCTION
 For All Your Building Needs
 NO JOB TOO SMALL
 Dennis Mitchell
 Phone 375-4387
 Wayne, Nebr.

KEITH JECH, C.L.U.
 All Types of Insurance and Real Estate

 375-1429
 316 Main Wayne

PLUMBING
 For All Your Plumbing Needs
 Contact:
Jim Spethman
 375-4499
Spethman Plumbing
 Wayne, Nebr.

WAYNE CARE CENTRE
 Intermediate Care I
 Where Caring Makes the Difference
 918 Main
 Phone 375-1922

OTTE CONSTRUCTION COMPANY
 • General Contractor
 • Commercial • Residential
 • Farm • Remodeling
E. Highway 35
 Wayne, NE
 375-2180

State National Insurance Company
 Insurance — Bonds
 in Reliable Companies
 305 Main Wayne 375-4888

REAL ESTATE SPECIALISTS
 • We Sell Farms and Homes
 • We Manage Farms
 • We Are Experts in these Fields
MIDWEST LAND CO.
 Phone 375-3385
 206 Main — Wayne, Nebr.

DENTIST
WAYNE DENTAL CLINIC
 S.P. Becker, D.D.S.
 Mineshaft Mall
 Phone 375-2889

FARMERS INSURANCE GROUP
 For All Your Insurance Needs
 Contact
Roy Korth
 220 West 7th
 Wayne, NE
 375-4100

RETAIL - WHOLESALE
CARLSON CLEARWATER FISH FARMS INC.
 For The Best In Fish
 • Live Fish • Frozon Fish
 • Fresh Dressed Fish • Sea Food
 RETAIL & WHOLESALE
Phone 375-3262
 One mile east and 1/4 south of 7th & Main in Wayne

Tired of Garbage Clutter From Overturned Garbage Cans?
Twice a Week Pickup
 If You Have Any Problems
 Call Us At 375-2147
MRSNY SANITARY SERVICE


DR. GEORGE H. GOBLIRSCH, D.D.S.
 110 Main Street
 Wayne, Nebraska
 Phone 375-3200

OPTOMETRIST
MAGNUSON EYE CARE
 Dr. Larry M. Magnuson
 Optometrist
 112 E. 2nd, Mineshaft Mall
 Wayne, NE 68787
 Phone 375-5160

SERVICES
HEIKES AUTOMOTIVE SERVICE
 • Major & Minor Repairs
 • Automatic Trans. Repairs
 • Radiator Repairs
 • 24 Hour Wrecker Service
 • Goodyear Tires
 419 Main — Wayne
 PHONE 375-4385

WAYNE CITY OFFICIALS

| | | |
|-------------------------|--------------------|---------------|
| Mayor | Wayne Marsh | 375-2797 |
| City Administrator | Philip A. Klostor | 375-1733 |
| City Clerk | Carol Brummond | 375-1733 |
| City Treasurer | Nancy Braden | 375-1733 |
| City Attorney | Olds, Swartz & Enz | 375-3585 |
| Councilman | Dr. Ralph Barclay | 375-1406 |
| | Carolyn Filter | 375-1510 |
| | Larry Johnson | 375-2864 |
| | Darrell Fuetberth | 375-3205 |
| | Randy Podarsen | 375-1636 |
| | Stan Hansen | 375-3878 |
| | Darrell Hoier | 375-1538 |
| | Freeman Decker | 375-2801 |
| Wayne Municipal Airport | Orin Zach, Mgr. | 375-4664 |
| EMERGENCY | | 911 |
| POLICE | | 375-2626 |
| FIRE | | CALL 375-1122 |
| HOSPITAL | | 375-3806 |

FINANCIAL PLANNING
George Phelps
 Certified Financial Planner
 416 Main Street
 Wayne, NE 68787
 375-1848



WAYNE VISION CENTER
DR. DONALD E. KOEBER
 OPTOMETRIST
 313 Main St. Phone 375-2020
 Wayne, Ne.

PROFESSIONAL
 • DRY CLEANING
 • PRESSING
 • LAUNDRY
WAYNE CLEANERS
 Phone 375-2333
 Pickup and Delivery available in Wayne
 HOURS
 8:30-5:30 M-F
 8:30-3:00 Sat.

FOR RENT

PHARMACIST
Will Davis, R.P.
 375-4249
Cheryl Hall, R.P.
 375-3610
SAV-MOR PHARMACY
 Phone 375-1444

ELLIS ELECTRIC
 Wayne 375-3566
 Allen
 635-2300 or 635-2456

INSURANCE

WILLIS JOHNSON
 Agent
 118 West 3rd Street
 Wayne, NE 68787

PHYSICIANS
WAYNE FAMILY PRACTICE GROUP P.C.
 Willis L. Wiseman, M.D.
 James A. Lindau, M.D.
 214 Pearl Street Wayne, NE
 Phone 375-1600
 HOURS: Monday-Friday 8-12 & 1:30-4:30, Saturday 8-12
 Tuesday & Thursday evenings by appointment.

WOOD PLUMBING & HEATING
 Commercial & Residential
 375-2002

WAYNE COUNTY OFFICIALS

| | | |
|------------------------------|------------------|----------|
| Assessor: | Doris Stipp | 375-1979 |
| Clerk: | Orgetta Morris | 375-2288 |
| Associate Judge: | Pearla Benjamin | 375-1622 |
| Sheriff: | LeRoy Janssen | 375-1911 |
| Deputy: | Doug Muhs | 375-4281 |
| Supt.: | Bob Sheckler | 375-1777 |
| Treasurer: | Leon Meyer | 375-3885 |
| Clerk of District Court: | Joann Ostrander | 375-2260 |
| Agricultural Agent: | Don Spitze | 375-3310 |
| Assistance Director: | Thelma Moeller | 375-2715 |
| Attorney: | Bob Enz | 375-2311 |
| Surveyor: | Clyde Flowers | |
| Veterans Service Officer: | Wayne Denklou | 375-2764 |
| Commissioners: | | |
| Dist. 1: | Merlin Beiermann | |
| Dist. 2: | Robert Nissen | |
| Dist. 3: | Jerry Pospisil | |
| District Probation Officers: | Herbert Hansen | 375-3433 |
| | Merlin Wright | 375-2516 |

10-classifieds

The Wayne Herald, Monday, December 22, 1986

help wanted

ACCIDENT, HEALTH & LIFE AGENTS

American Republic Insurance Company now has career sales positions open to sell our outstanding Major Medical, Medicare supplements, Nursing Home and Life Savings products.

1. Top Commissions
2. A+ Best's Rating
3. Excellent advancement opportunity

American Republic Insurance Company
620 N. 48th, Suite 200
Lincoln, Nebraska 68504
402-467-1790 Call between 9 a.m. & 11 a.m.

ACCEPTING APPLICATIONS

Truck drivers needed for expanding transportation department. All teams with new IH Conventional. \$22100/yr.-guaranteed with additional safety and incentive bonus. Home most weekends. Company paid layovers, vacation, profit sharing and life insurance. Health insurance plan available at group rate. Must be 23 years or older and possess a current DOT physical. Verifiable experience and good driving record a must. Applications taken 8 a.m.-5 p.m. Monday-Friday; 9 a.m.-noon Saturday. Interviews are 1:30-5 p.m. Monday-Friday. Contact Larry Hintz, Milton G. Waldbaum Company, Wakefield, NE. 402-287-2211 ext. 101. E.O.E.

mobile homes

FOR RENT: 3 bedroom mobile home. Available immediately. 375-4967. D15ff

cards of thanks

THE FAMILY OF Jesse Kelly of Page, NE, wishes to thank everyone for their acts of kindness during our time of need. A special thank you to Pastor Fale for his prayers and comfort. Mrs. Millie Kelly; Mr. & Mrs. Tom Kelly & family; Mr. & Ms. Cyril Hansen & family; Mr. & Mrs. Bernard Grimes & family. D22

A THANK YOU to the ladies of the Jolly Sewing Circle for the goodies they delivered to me for Christmas. It was greatly appreciated. Erwin Vahlkamp. D22

THE KAPPA wishes to thank the following merchants for their contributions to their Christmas party: Chesterman's Bottling Co.; Farmer Candy Co.; Bill's G.W. P.F.M.; Vel's Bakery; Bentchack Clinic; Wayne Campus Shop and Griess Rexall. D22

automobiles

FOR SALE: 1984 Ford F-150, 4x4, XLT package. Combination paint, new tires. Call 585-4891 before 7 a.m. or after 6 p.m. D22

WANTED
Part-time Person For Advertising Layout. Apply in Person At The Wayne Herald 114 Main - Wayne

MANAGER/REPRESENTATIVE
Trade school has immediate opening for Manager/Representative... to arrange a confidential interview. call: Morris Goodson, 1-800-562-7898.

FEDERAL, STATE & CIVIL SERVICE JOBS \$15,414 to \$58,785/Year. Now Hiring. CALL JOB LINE 1-518-459-3611 Ext. F5091 for listing. 24HR. D8

HELP-WANTED: RN-3 days per week. Apply at Wisner Manor or call 529-3286. O2ff

for rent

FOR RENT: 2 bedroom duplex located adjacent to Winside High School. Includes stove, refrigerator and air conditioning. \$150 per month plus utilities. 307-632-0719. S29ff

FOR RENT: 3 bedroom home, new energy efficient heating system. Phone 372-3226 or 375-4242. D15ff

FOR RENT: In Winside, 2 bedroom basement home. \$130 plus utilities, deposit required. Phone 286-4816. D1813

wanted

WANTED TO BUY: 50 to 70 head of stock cattle due to calve in March to April. Phone 396-3590. D1513

Regular Rates
Standard Ads - 25¢ per word
Minimum of 32.00 - third consecutive run free
Display Ads -
\$3.25 per column-inch
Cards of Thanks
\$2.50 for 50 words
\$4.00 for 50-100 words
\$6.50 for 100-150 words
\$8.00 for 150-200 words



Season's Greetings

Vakoc Building & Home Center and Final Touch will be closed from Dec. 25 to Jan. 1 for physical inventory. We regret any inconvenience and look forward to serving you in 1987.



VAKOC CONSTRUCTION CO.
110 So. Logan Street • Wayne, Nebr. 68787 • 375-3374

COLUMBUS FEDERAL CLOSING 12:00 ON CHRISTMAS EVE

Super Specials For Christmas Memories From Sav-Mor Pharmacy



| Sav-Mor COUPON | | COLOR PRINT FILM DEVELOPING (C-41 process only) | |
|----------------|---------------|---|--------|
| 12 | Exposure Roll | | \$1.99 |
| 15 | Exposure Disc | | 2.69 |
| 24 | Exposure Roll | | 3.99 |
| 36 | Exposure Roll | | 5.59 |

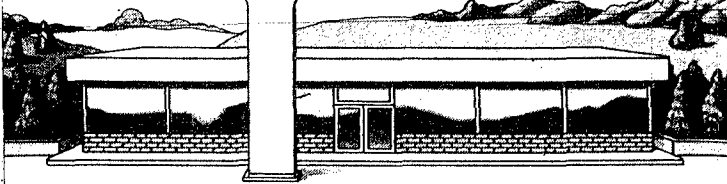
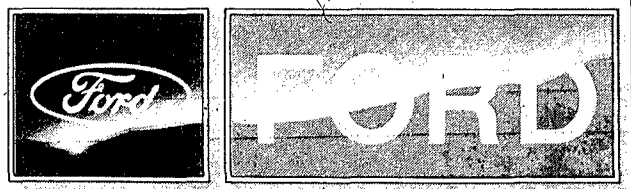
Offer good on single set of standard size prints. Limit one roll with this coupon (not valid with any other coupon). Limited time offer. Ask for details. Coupon redeemable at this store only. Coupon Expires Dec. 29, 1986 #1997



Sav-Mor Pharmacy
1922 Main St. Wayne 375-1444

CAN YOU SPOT THE DEALER IN THIS AD WHO GUARANTEES CAR REPAIRS FOR LIFE?

ARNIE'S FORD-MERCURY



Nobody really gives free car repairs, of course. But we give you the next best thing—our free Lifetime Service Guarantee. Here's how it works. If we repair your Ford, Mercury, Lincoln, or Ford light truck, you pay us only once. And if that covered part ever fails or wears out, we guarantee to fix it or replace it again free. Free parts. Free labor. It covers thousands of parts and lasts as long as you own your vehicle—no matter where you bought it or when. So

the next time your car needs repair, bring it to us. And get our free Lifetime Service Guarantee. It's the next best thing to free car repairs. Ask us to see a copy of the Lifetime Service Guarantee.



WE FIX CARS FOR KEEPS.

Arnie's FORD-MERCURY
119 East Third
Wayne, Nebraska
373-3780

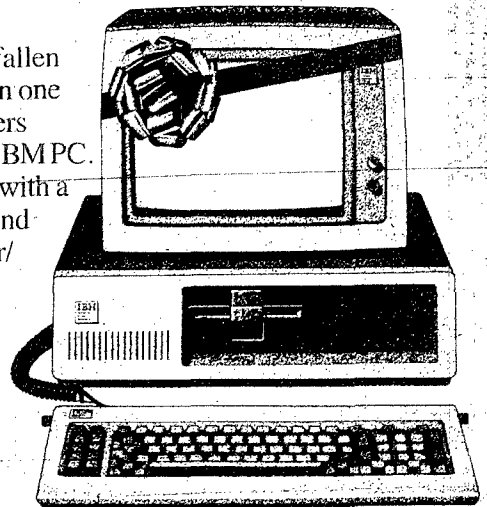
Winter wonder.

The temperature's fallen and so has our price on one of the hottest computers around. The original IBM PC.

It comes complete with a single diskette drive and monochrome monitor/printer adapter.

Get a high quality gift with low monthly payments.

So get the IBM PC and make this your most productive winter ever.



\$45*
PER MONTH

*\$1395.00 cash price
18.00 percent APR
\$495.00 down payment
24 payments of \$45.00



Mon.-Fri. 9 a.m.-5:30 p.m.
Thurs. 9 a.m.-9 p.m.
Sat. 9 a.m.-4 p.m.
Sunday 12:00-4:00 p.m.

VAL.COM
COMPUTER CENTER

1112 Riverside Blvd.
Norfolk, NE
Phone 371-2247

LOOK FOR THE IBM EMBLEM, YOUR ASSURANCE OF IBM FACTORY SALES, SUPPORT, & SERVICE